

Shobhit

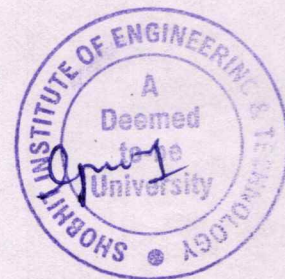
Institute of Engineering & Technology
Deemed to be University

EDUCATION EMPOWERS

Feedback on Curriculum

B.B.A. LL.B. (H)

Session: 2021-22.





Shobhit

Institute of Engineering & Technology
Deemed to-be-University

EDUCATION EMPOWERS

Feedback Analysis – B.B.A. LL.B. (H)

The feedback from different stakeholders: students, faculty members, parents and alumnae provide important inputs for the curriculum - enrichment. Students at the end of every academic session provide feedback on teaching learning process and curriculum aspect. Faculty members provide feedback on curriculum design and development. Feedback regarding the campus facilities and curriculum from alumnae and parents as well.

Feedback from students

The feedback was obtained on a scale of 1 to 5. The categorization of rating based on average score of different parameters is as follows: Excellent (5), Very good (4), Good (3), Average (2), Poor (1). The results are derived in terms of percentage of students with common views, average rating.

S.No	Parameter	Strongly agree	Agree	Neutral	Disagree	Strongly disagree
1	Extent of syllabi covered in the class	54	28	13	2	2
2	Student Teacher Interaction	57	26	13	2	2
3	Teaching Methodology adopted by the teachers	54	26	15	2	2
4	Career Guidance and Assistance By Teachers	39	26	28	7	0
5	Integration of theory and Practical (if applicable)	41	26	22	9	2
6	Overall Learning Environment	48	26	20	4	2
7	Syllabus offered by the courses.	46	26	17	9	2
8	The design of the courses in terms of extra learning or self- learning.	41	28	26	4	0
9	Courses offering LAB components.	35	30	28	7	0
10	Depth of the syllabus of the courses in relation to the competencies expected by industry/current global scenarios.	46	28	17	9	0
11	Sequence of the courses provided in the curriculum.	48	35	15	2	0

SHOBHIT INSTITUTE OF ENGINEERING & TECHNOLOGY
Deemed to-be-University
Dr. Chaitanya

Percentage Graph - Students

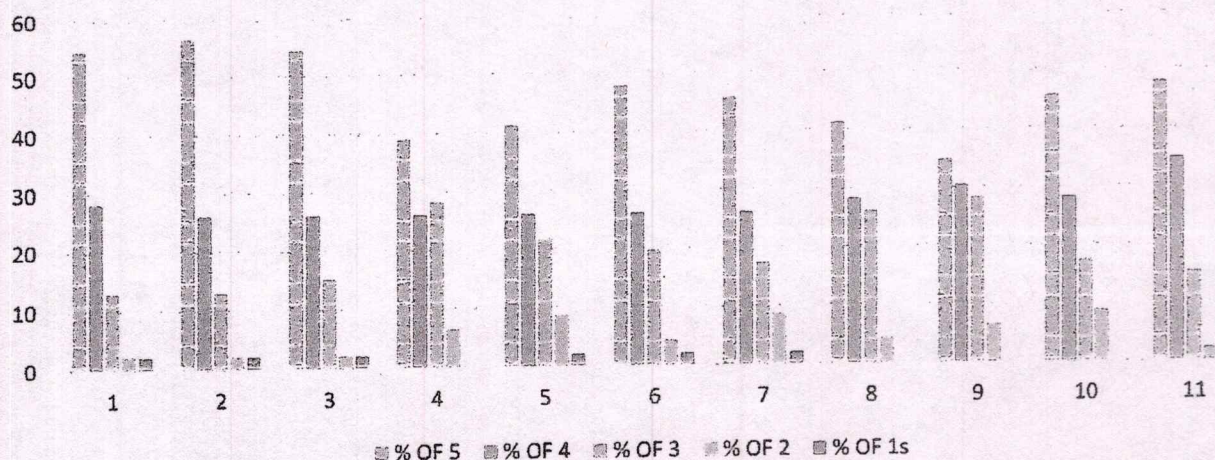
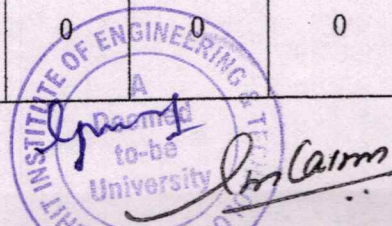


Figure 1: Student Feedback

Feedback from faculty members

Feedback from faculty members was collected for their views towards the curriculum design & development. Categorization of the ratings are as follows: Strongly agree (5), Agree (4), Neutral (3), Disagree (2), Strongly disagree (1). The results are derived in terms of percentage of students with common views, average rating.

S.NO	Parameter	Strongly agree	Agree	Neutral	Disagree	Strongly disagree
1	Board of studies ensures that the latest and relevant programmes are being offered	67	33	0	0	0
2	Employability is given weightage in curriculum design and development	56	44	0	0	0
3	Teachers are given enough freedom to contribute their ideas on curriculum design and development freedom to contribute	89	11	0	0	0
4	System followed by the University for the design and development of curriculum is effective	78	22	0	0	0
5	Curriculum is updated from time to time	56	44	0	0	0
6	Representation from bussiness and industry in Boards of studies is helpful in designing and improving the course bussiness and industry	78	22	0	0	0



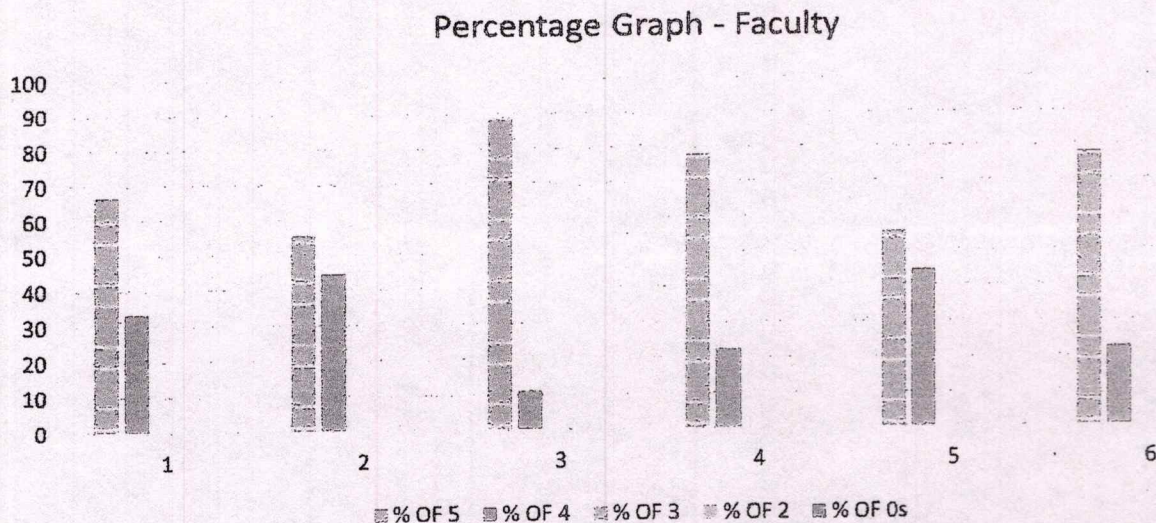


Figure 2: Faculty Feedback

Feedback from Alumni

Feedback from the Alumni was collected in the view to receive inputs regarding the facilities and curriculum so that both can be updated accordingly. Categorization of the ratings are as follows: Strongly agree (5), Agree (4), Moderately agree (3), Disagree (2), Strongly disagree (1). The analysis was done on the bases of the percentage of the of response received for the various parameters.

S.No	Parameter	Strongly agree	Agree	Neutral	Disagree	Strongly disagree
1	I feel proud to have been a student of the University	87	13	0	0	0
2	The learning I had in the University has been useful in my career.	47	53	0	0	0
3	Developments in the University in the recent years are appreciative.	67	27	7	0	0
4	The new courses introduced met contemporary requirements.	40	60	0	0	0
5	The University is involving alumni in its activities.	73	13	13	0	0
6	The alumni have a role to play in academically strengthening the University.	67	27	7	0	0
7	The alumni have a role to play in financially strengthening the University.	53	27	20	0	0
8	University's initiatives to strengthen its network with industry, Business houses and other institutions is a good step and the alumni have a role to play in this initiative.	53	33	13	0	0

9	Alumni are tied to their alma mater not only for emotional reasons but also as a matter of responsibility towards their younger successors	60	33	7	0	0
---	--	----	----	---	---	---

Percentage Graph - Alumni

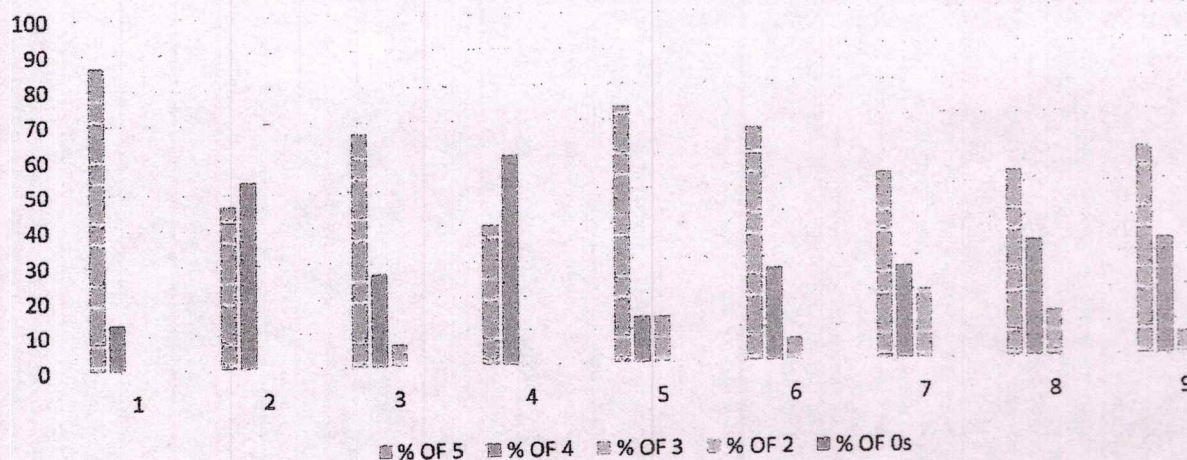
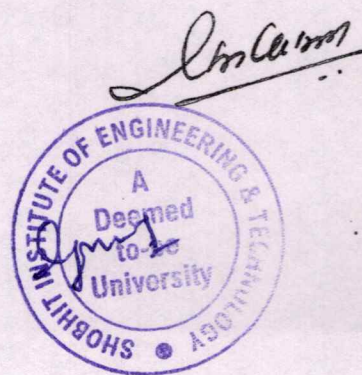


Figure 3: Alumni Feedback





Shobhit
Institute of Engineering & Technology
Deemed to be University
EDUCATION EMPOWERS

School of Law and Constitutional Studies

Program Name: B.B.A. LL.B.(H)

Feedback statements by different Stakeholders

Sr. No.	Stakeholder	Stakeholder's Input
1.	Students	Syllabus is apt keeping in mind the regulatory framework of Indian Legal System.
2.	Faculty Members	Emphasis should be made to enhance the lawyering skills among students
3.	Alumni	New amendments should be added as and when required in the syllabus. Faculty helps students to understand concepts in a good manner.



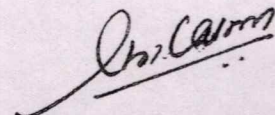
ACTION TAKEN ON FEEDBACK

Action Taken Report

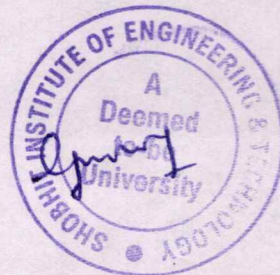
Date:

Program Name: B.B.A. LL.B. (H)

Feedback of the stake holders was satisfactory. All stakeholders were satisfied with the syllabus with no immediate modifications required however timely revisions of new amendment needs to be enbibed in syllabus as and when required was suggested for enhancement of knowledge.



Dean/Director





Shobhit

Institute of Engineering & Technology

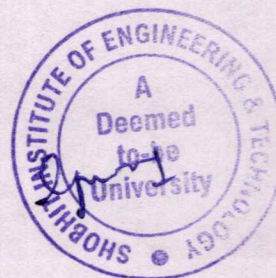
Deemed to be University

EDUCATION EMPOWERS

Feedback on Curriculum

B.A. LL.B.

Session: 2021-22.





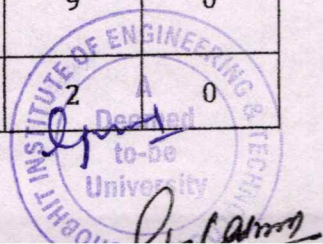
Feedback Analysis – B.A. LL.B.

The feedback from different stakeholders: students, faculty members, parents and alumnae provide important inputs for the curriculum - enrichment. Students at the end of every academic session provide feedback on teaching, learning process and curriculum aspect. Faculty members provide feedback on curriculum design and development. Feedback regarding the campus facilities and curriculum from alumnae and parents as well.

Feedback from students

The feedback was obtained on a scale of 1 to 5. The categorization of rating based on average score of different parameters is as follows: Excellent (5), Very good (4), Good (3), Average (2), Poor (1). The results are derived in terms of percentage of students with common views, average rating.

S.No	Parameter	Strongly agree	Agree	Neutral	Disagree	Strongly disagree
1	Extent of syllabi covered in the class	54	28	13	2	2
2	Student Teacher Interaction	57	26	13	2	2
3	Teaching Methodology adopted by the teachers	54	26	15	2	2
4	Career Guidance and Assistance By Teachers	39	26	28	7	0
5	Integration of theory and Practical (if applicable)	41	26	22	9	2
6	Overall Learning Environment	48	26	20	4	2
7	Syllabus offered by the courses.	46	26	17	9	2
8	The design of the courses in terms of extra learning or self- learning.	41	28	26	4	0
9	Courses offering LAB components.	35	30	28	7	0
10	Depth of the syllabus of the courses in relation to the competencies expected by industry/current global scenarios.	46	28	17	9	0
11	Sequence of the courses provided in the curriculum.	48	35	15	2	0



Percentage Graph - Students

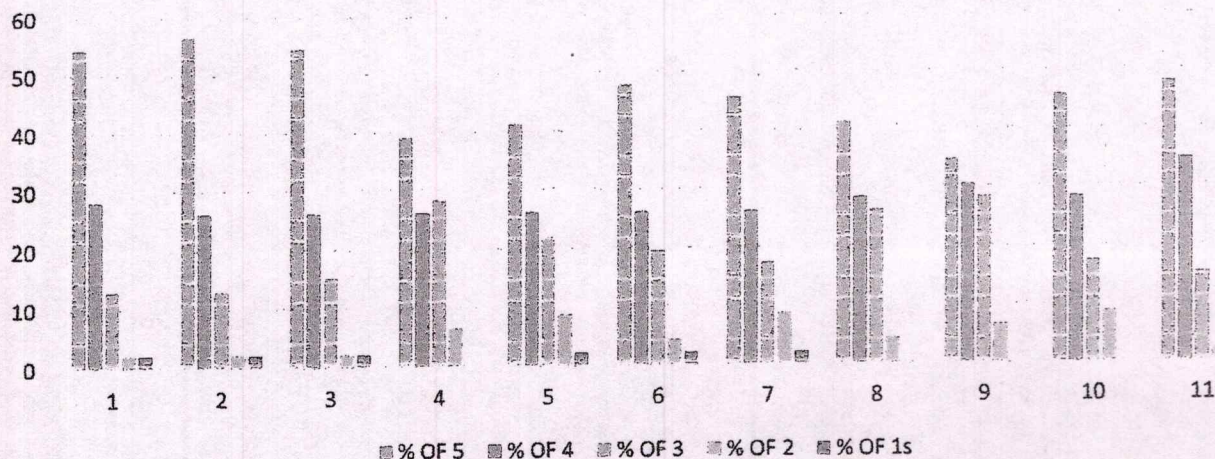
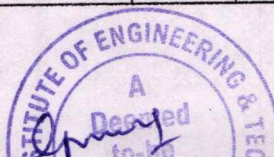


Figure1: Student feedback

Feedback from faculty members

Feedback from faculty members were collected for their views towards the curriculum design & development. Categorization of the ratings are as follows: Strongly agree (5), Agree (4), Neutral (3), Disagree (2), Strongly disagree (1). The analysis was done on the bases of the percentage of the of response received for the various parameters.

S.NO	Parameter	Strongly agree	Agree	Neutral	Disagree	Strongly disagree
1	Board of studies ensures that the latest and relevant programmes are being offered	67	33	0	0	0
2	Employability is given weightage in curriculum design and development	56	44	0	0	0
3	Teachers are given enough freedom to contribute their ideas on curriculum design and development freedom to contribute	89	11	0	0	0
4	System followed by the University for the design and development of curriculum is effective	78	22	0	0	0
5	Curriculum is updated from time to time	56	44	0	0	0
6	Representation from bussiness and industry in Boards of studies is helpful in designing and improving the course bussiness and industry	78	22	0	0	0



Signature

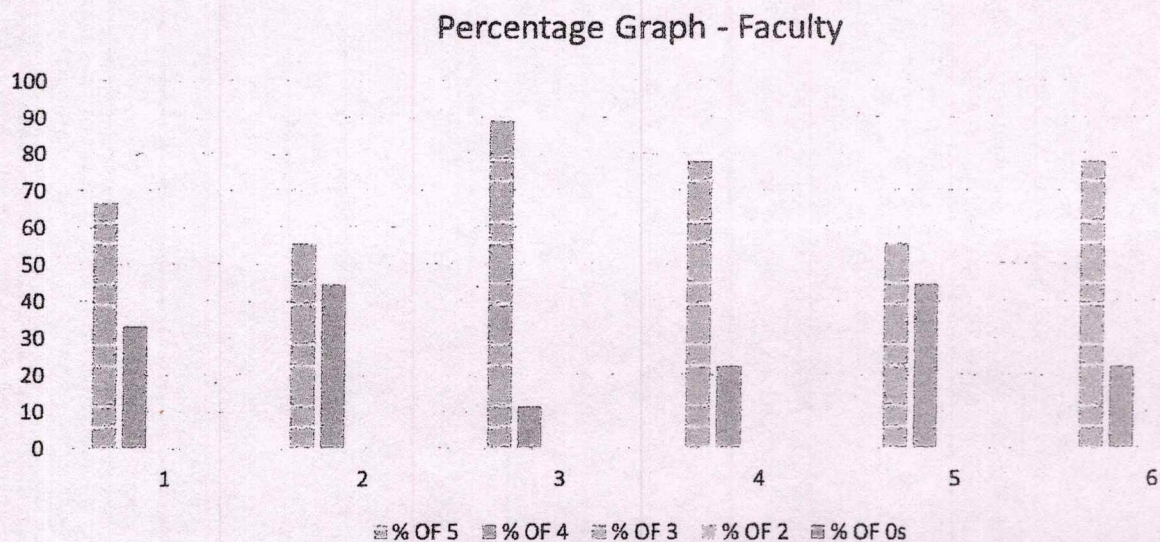


Figure 2: Faculty Feedback

Feedback from Alumni

Feedback from the Alumni was collected in the view to receive inputs regarding the facilities and curriculum so that both can be updated accordingly. Categorization of the ratings are as follows: Strongly agree (5), Agree (4), Moderately agree (3), Disagree (2), Strongly disagree (1). The analysis was done on the bases of the percentage of the of response received for the various parameters.

S.No	Parameter	Strongly agree	Agree	Neutral	Disagree	Strongly disagree
1	I feel proud to have been a student of the University	87	13	0	0	0
2	The learning I had in the University has been useful in my career.	47	53	0	0	0
3	Developments in the University in the recent years are appreciative.	67	27	7	0	0
4	The new courses introduced met contemporary requirements.	40	60	0	0	0
5	The University is involving alumni in its activities.	73	13	13	0	0
6	The alumni have a role to play in academically strengthening the University.	67	27	7	0	0
7	The alumni have a role to play in financially strengthening the University.	53	27	20	0	0
8	University's initiatives to strengthen its network with industry, Business houses and other institutions is a good step and the alumni have a role to play in this initiative.	53	33	13	0	0
	Alumni are tied to their alma mater not					

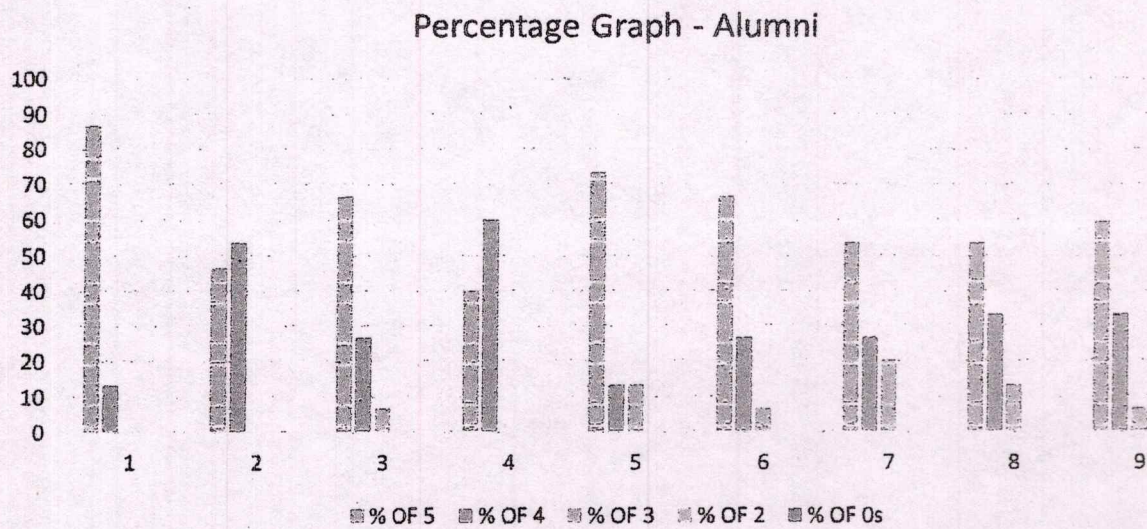
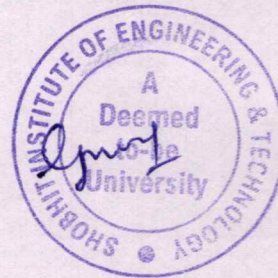


Figure 3: Alumni Feedback

Dr. Chandra

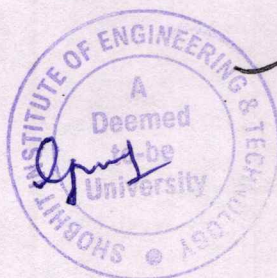


School of Law and Constitutional Studies

Program Name: B.A. LL.B.

Feedback statements by different Stakeholders

Sr. No.	Stakeholder	Stakeholder's Input
1.	Students	Syllabus is apt keeping in mind the regulatory framework of Indian Legal System.
2.	Faculty Members	Emphasis should be made to enhance the lawyering skills among students
3.	Alumni	New amendments should be added as and when required in the syllabus. Faculty helps students to understand concepts in a good manner.



Dr. Chandra

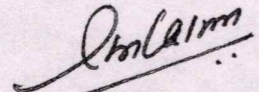
ACTION TAKEN ON FEEDBACK

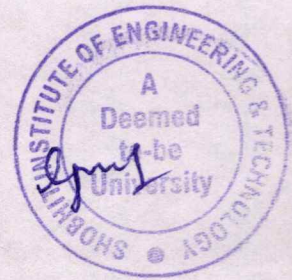
Action Taken Report

Date:

Program Name: B.A. LL.B.

Feedback of the stake holders was satisfactory. All stakeholders were satisfied with the syllabus with no immediate modifications required however timely revisions of new amendment needs to be enbibed in syllabus as and when required was suggested for enhancement of knowledge.


Dean/Director





Shobhit

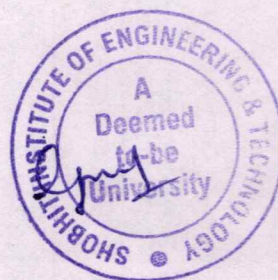
Institute of Engineering & Technology
Deemed to be University

EDUCATION EMPOWERS

Feedback on Curriculum

B.Com. LL. B (H).

Session: 2021-22.





Shobhit

Institute of Engineering & Technology
Deemed to be University

EDUCATION EMPOWERS

Feedback Analysis – B.Com. LL.B.

The feedback from different stakeholders: students, faculty members, parents and alumnae provide important inputs for the curriculum - enrichment. Students at the end of every academic session provide feedback on teaching, learning process and curriculum aspect. Faculty members provide feedback on curriculum design and development. Feedback regarding the campus facilities and curriculum from alumnae and parents as well.

Feedback from students

The feedback was obtained on a scale of 1 to 5. The categorization of rating based on average score of different parameters is as follows: Excellent (5), Very good (4), Good (3), Average (2), Poor (1). The results are derived in terms of percentage of students with common views, average rating.

S.No	Parameter	Strongly agree	Agree	Neutral	Disagree	Strongly disagree
1	Extent of syllabi covered in the class	54	28	13	2	2
2	Student Teacher Interaction	57	26	13	2	2
3	Teaching Methodology adopted by the teachers	54	26	15	2	2
4	Career Guidance and Assistance By Teachers	39	26	28	7	0
5	Integration of theory and Practical (if applicable)	41	26	22	9	2
6	Overall Learning Environment	48	26	20	4	2
7	Syllabus offered by the courses.	46	26	17	9	2
8	The design of the courses in terms of extra learning or self- learning.	41	28	26	4	0
9	Courses offering LAB components.	35	30	28	7	0
10	Depth of the syllabus of the courses in relation to the competencies expected by industry/current global scenarios.	46	28	17	9	0
11	Sequence of the courses provided in the curriculum.	48	35	15	2	0



Signature

Percentage Graph - Students

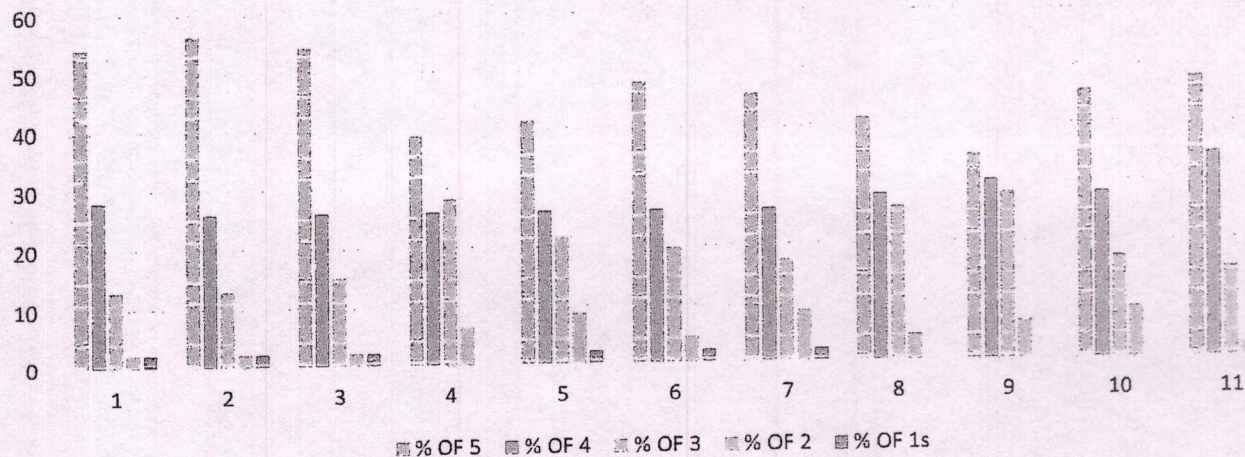


Figure1: Student feedback

Feedback from faculty members

Feedback from faculty members were collected for their views towards the curriculum design & development. Categorization of the ratings are as follows: Strongly agree (5), Agree (4), Neutral (3), Disagree (2), Strongly disagree (1). The analysis was done on the bases of the percentage of the of response received for the various parameters.

S.NO	Parameter	Strongly agree	Agree	Neutral	Disagree	Strongly disagree
1	Board of studies ensures that the latest and relevant programmes are being offered	67	33	0	0	0
2	Employability is given weightage in curriculum design and development	56	44	0	0	0
3	Teachers are given enough freedom to contribute their ideas on curriculum design and development freedom to contribute	89	11	0	0	0
4	System followed by the University for the design and development of curriculum is effective	78	22	0	0	0
5	Curriculum is updated from time to time	56	44	0	0	0
6	Representation from bussiness and industry in Boards of studies is helpful in designing and improving the course bussiness and industry	78	22	0	0	0

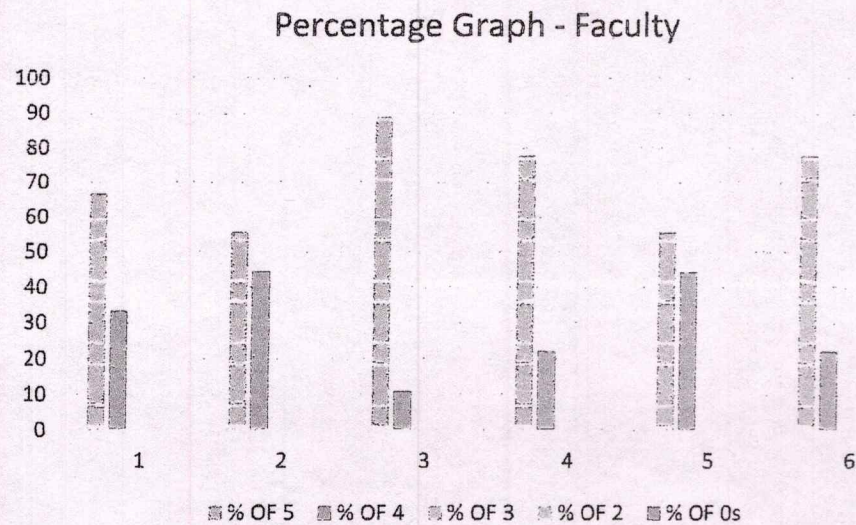


Figure 2: Faculty Feedback

Feedback from Alumni

Feedback from the Alumni was collected in the view to receive inputs regarding the facilities and curriculum so that both can be updated accordingly. Categorization of the ratings are as follows: Strongly agree (5), Agree (4), Moderately agree (3), Disagree (2), Strongly disagree (1). The analysis was done on the bases of the percentage of the of response received for the various parameters.

S.No	Parameter	Strongly agree	Agree	Neutral	Disagree	Strongly disagree
1	I feel proud to have been a student of the University	87	13	0	0	0
2	The learning I had in the University has been useful in my career.	47	53	0	0	0
3	Developments in the University in the recent years are appreciative.	67	27	7	0	0
4	The new courses introduced met contemporary requirements.	40	60	0	0	0
5	The University is involving alumni in its activities.	73	13	13	0	0
6	The alumni have a role to play in academically strengthening the University.	67	27	7	0	0
7	The alumni have a role to play in financially strengthening the University.	53	27	20	0	0
8	University's initiatives to strengthen its network with industry, Business houses and other institutions is a good step and the alumni have a role to play in this initiative.	53	33	13	0	0
9	Alumni are tied to their alma mater not only for emotional reasons but also as a matter of responsibility towards their younger successors	60	33	7	0	0

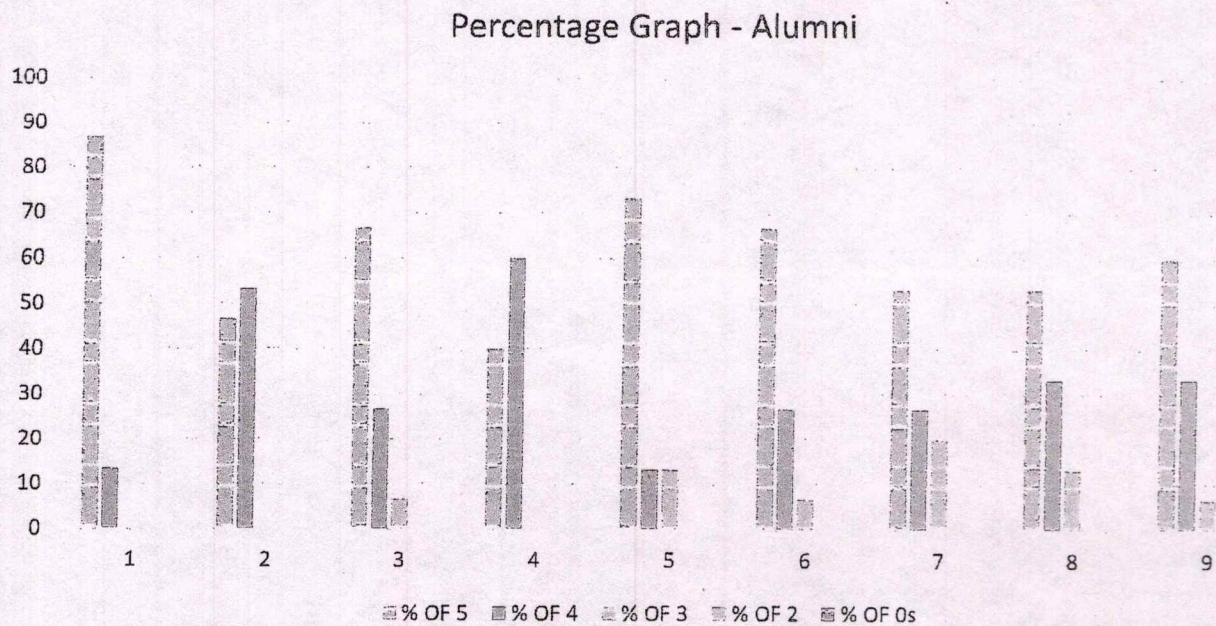
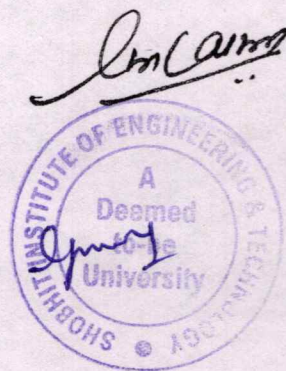


Figure 3: Alumni Feedback

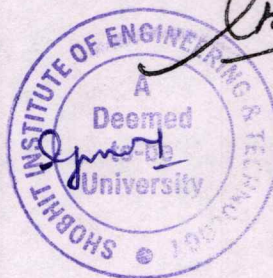


School of Law and Constitutional Studies

Program Name: B.Com. LL.B.(H)

Feedback statements by different Stakeholders

Sr. No.	Stakeholder	Stakeholder's Input
1.	Students	Syllabus is apt keeping in mind the regulatory framework of Indian Legal System.
2.	Faculty Members	Emphasis should be made to enhance the lawyering skills among students
3.	Alumni	New amendments should be added as and when required in the syllabus. Faculty helps students to understand concepts in a good manner.



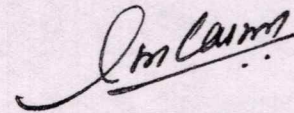
ACTION TAKEN ON FEEDBACK

Action Taken Report

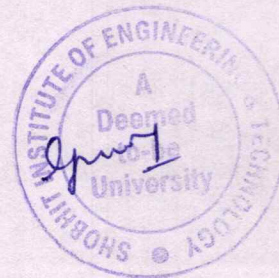
Date:

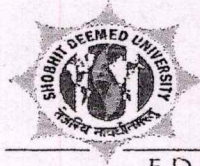
Program Name: B.Com. LL.B.

Feedback of the stake holders was satisfactory. All stakeholders were satisfied with the syllabus with no immediate modifications required however timely revisions of new amendment needs to be enbided in syllabus as and when required was suggested for enhancement of knowledge.



Dean/Director





Shobhit

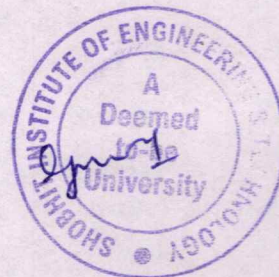
Institute of Engineering & Technology
Deemed to be University

EDUCATION EMPOWERS

Feedback on Curriculum

LL.B.

Session: 2021-22.





Shobhit

Institute of Engineering & Technology
Deemed to be University

EDUCATION EMPOWERS

Feedback Analysis – LL.B.

The feedback from different stakeholders: students, faculty members, parents and alumnae provide important inputs for the curriculum - enrichment. Students at the end of every academic session provide feedback on teaching learning process and curriculum aspect. Faculty members provide feedback on curriculum design and development. Feedback regarding the campus facilities and curriculum from alumnae and parents as well.

Feedback from students

The feedback was obtained on a scale of 1 to 5. The categorization of rating based on average score of different parameters is as follows: Excellent (5), Very good (4), Good (3), Average (2), Poor (1). The results are derived in terms of percentage of students with common views, average rating.

S.No	Parameter	Strongly agree	Agree	Neutral	Disagree	Strongly disagree
1	Extent of syllabi covered in the class	54	28	13	2	2
2	Student Teacher Interaction	57	26	13	2	2
3	Teaching Methodology adopted by the teachers	54	26	15	2	2
4	Career Guidance and Assistance By Teachers	39	26	28	7	0
5	Integration of theory and Practical (if applicable)	41	26	22	9	2
6	Overall Learning Environment	48	26	20	4	2
7	Syllabus offered by the courses.	46	26	17	9	2
8	The design of the courses in terms of extra learning or self- learning.	41	28	26	4	0
9	Courses offering LAB components.	35	30	28	7	0
10	Depth of the syllabus of the courses in relation to the competencies expected by industry/current global scenarios.	46	28	17	9	0
11	Sequence of the courses provided in the curriculum.	48	35	15	2	0



Dr. Gaur

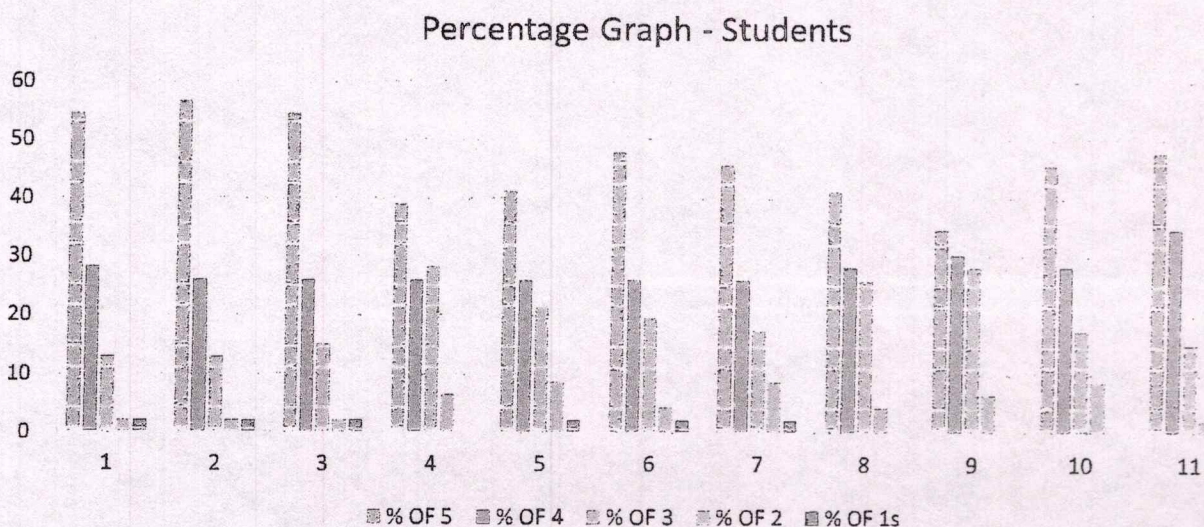


Figure 1: Student Feedback

Feedback from faculty members

Feedback from faculty members was collected for their views towards the curriculum design & development. Categorization of the ratings are as follows: Strongly agree (5), Agree (4), Neutral (3), Disagree (2), Strongly disagree (1). The results are derived in terms of percentage of students with common views, average rating.

S.NO	Parameter	Strongly agree	Agree	Neutral	Disagree	Strongly disagree
1	Board of studies ensures that the latest and relevant programmes are being offered	67	33	0	0	0
2	Employability is given weightage in curriculum design and development	56	44	0	0	0
3	Teachers are given enough freedom to contribute their ideas on curriculum design and development freedom to contribute	89	11	0	0	0
4	System followed by the University for the design and development of curriculum is effective	78	22	0	0	0
5	Curriculum is updated from time to time	56	44	0	0	0
6	Representation from bussiness and industry in Boards of studies is helpful in designing and improving the course business and industry	78	22	0	0	0

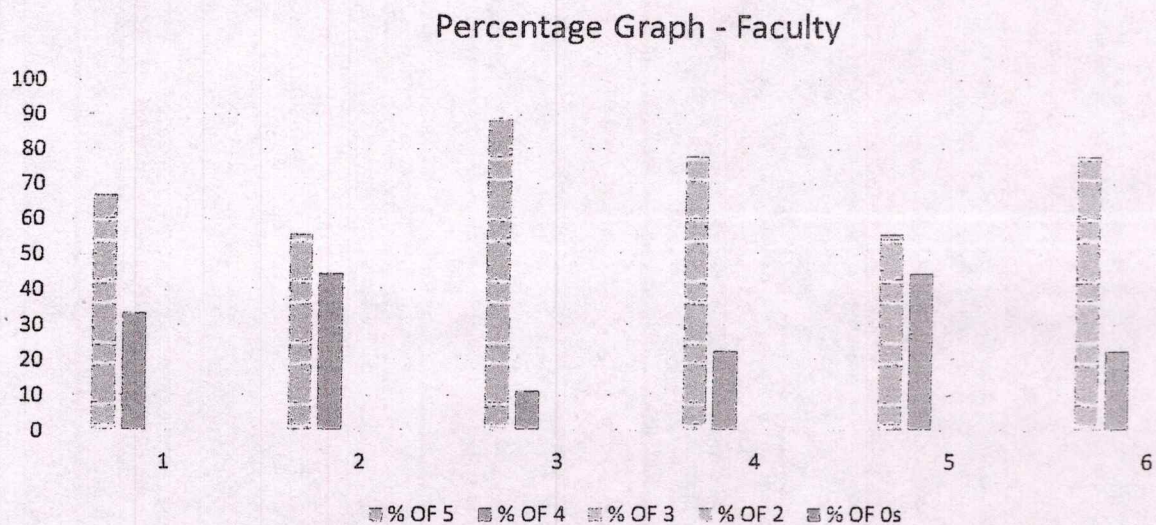


Figure 2: Faculty Feedback

Feedback from Alumni

Feedback from the Alumni was collected in the view to receive inputs regarding the facilities and curriculum so that both can be updated accordingly. Categorization of the ratings are as follows: Strongly agree (5), Agree (4), Moderately agree (3), Disagree (2), Strongly disagree (1). The analysis was done on the bases of the percentage of the of response received for the various parameters.

S.No	Parameter	Strongly agree	Agree	Neutral	Disagree	Strongly disagree
1	I feel proud to have been a student of the University	87	13	0	0	0
2	The learning I had in the University has been useful in my career.	47	53	0	0	0
3	Developments in the University in the recent years are appreciative.	67	27	7	0	0
4	The new courses introduced met contemporary requirements.	40	60	0	0	0
5	The University is involving alumni in its activities.	73	13	13	0	0
6	The alumni have a role to play in academically strengthening the University.	67	27	7	0	0
7	The alumni have a role to play in financially strengthening the University.	53	27	20	0	0
8	University's initiatives to strengthen its network with industry, Business houses and other institutions is a good step and the alumni have a role to play in this initiative.	53	33	13	0	0

9	Alumni are tied to their alma mater not only for emotional reasons but also as a matter of responsibility towards their younger successors	60	33	7	0	0
---	--	----	----	---	---	---

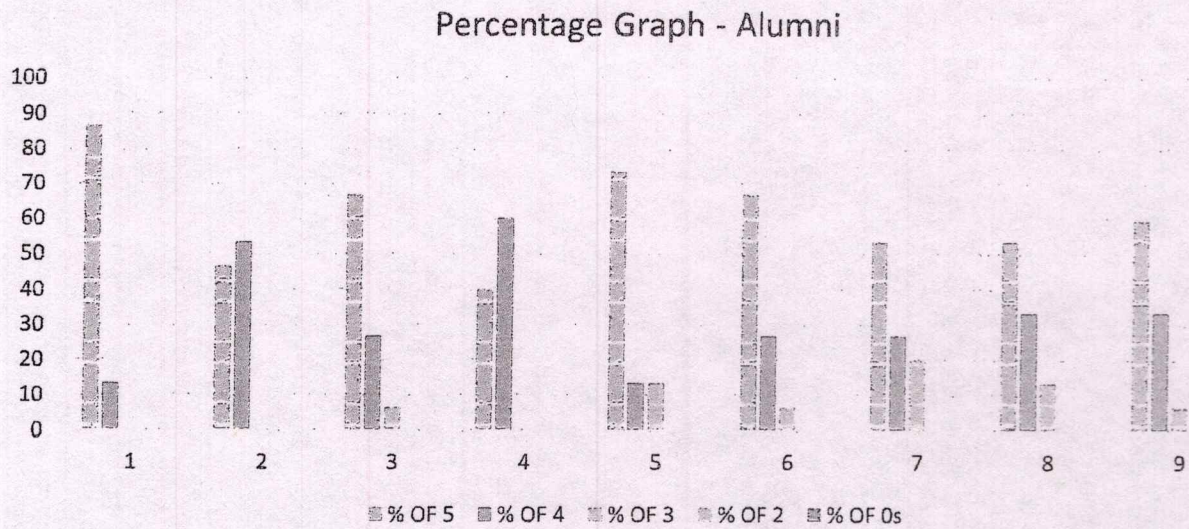
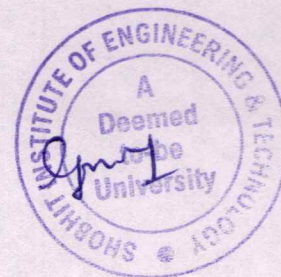


Figure 3: Alumni Feedback

Dr. Chandra





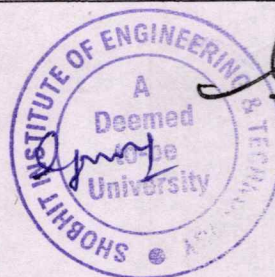
Shobhit
Institute of Engineering & Technology
Deemed to be University
EDUCATION EMPOWERS

School of Law and Constitutional Studies

Program Name: LL.B.

Feedback statements by different Stakeholders

Sr. No.	Stakeholder	Stakeholder's Input
1.	Students	Syllabus is apt keeping in mind the regulatory framework of Indian Legal System.
2.	Faculty Members	Emphasis should be made to enhance the lawyering skills among students
3.	Alumni	New amendments should be added as and when required in the syllabus. Faculty helps students to understand concepts in a good manner.



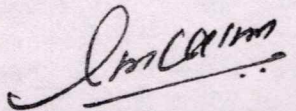
ACTION TAKEN ON FEEDBACK

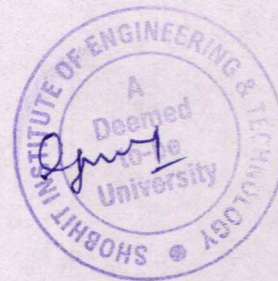
Action Taken Report

Date:

Program Name: LL.B.

Feedback of the stake holders was satisfactory. All stakeholders were satisfied with the syllabus with no immediate modifications required however timely revisions of new amendment needs to be enbiped in syllabus as and when required was suggested for enhancement of knowledge.


Dean/Director





Shobhit

Institute of Engineering & Technology
Deemed to-be University

EDUCATION EMPOWERS

Feedback on Curriculum

LL.M.

Session: 2021-22.





Shobhit

Institute of Engineering & Technology
Deemed to be University

EDUCATION EMPOWERS

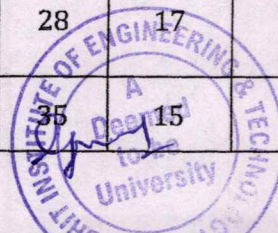
Feedback Analysis – LL.M.

The feedback from different stakeholders: students, faculty members, parents and alumnae provide important inputs for the curriculum - enrichment. Students at the end of every academic session provide feedback on teaching learning process and curriculum aspect. Faculty members provide feedback on curriculum design and development. Feedback regarding the campus facilities and curriculum from alumnae and parents as well.

Feedback from students

The feedback was obtained on a scale of 1 to 5. The categorization of rating based on average score of different parameters is as follows: Excellent (5), Very good (4), Good (3), Average (2), Poor (1). The results are derived in terms of percentage of students with common views, average rating.

S.No	Parameter	Strongly agree	Agree	Neutral	Disagree	Strongly disagree
1	Extent of syllabi covered in the class	54	28	13	2	2
2	Student Teacher Interaction	57	26	13	2	2
3	Teaching Methodology adopted by the teachers	54	26	15	2	2
4	Career Guidance and Assistance By Teachers	39	26	28	7	0
5	Integration of theory and Practical (if applicable)	41	26	22	9	2
6	Overall Learning Environment	48	26	20	4	2
7	Syllabus offered by the courses.	46	26	17	9	2
8	The design of the courses in terms of extra learning or self- learning.	41	28	26	4	0
9	Courses offering LAB components.	35	30	28	7	0
10	Depth of the syllabus of the courses in relation to the competencies expected by industry/current global scenarios.	46	28	17	9	0
11	Sequence of the courses provided in the curriculum.	48	35	15	2	0



Dr. Anam

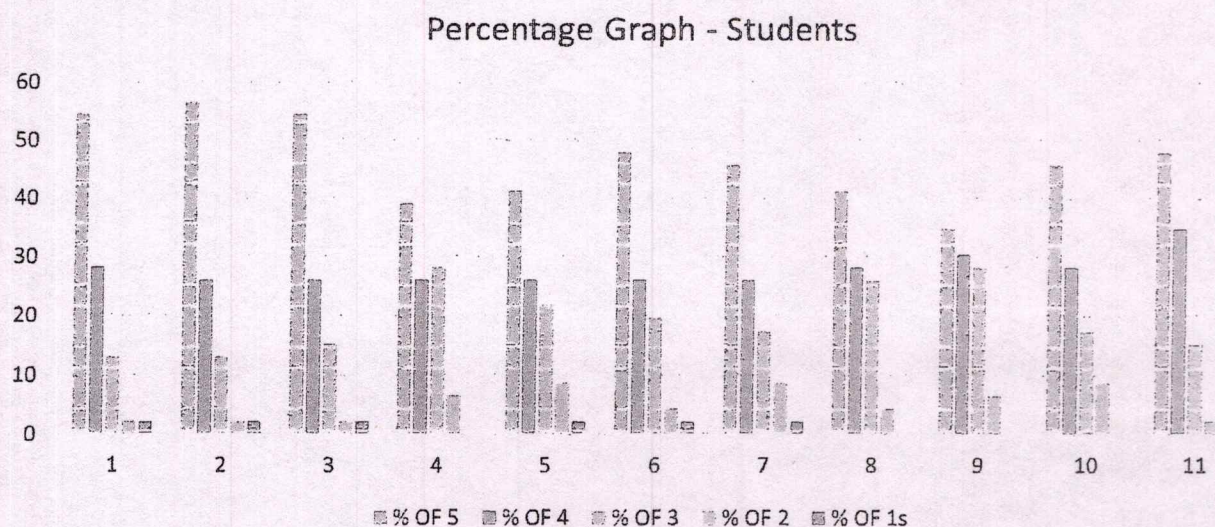


Figure 1: Student Feedback

Feedback from faculty members

Feedback from faculty members was collected for their views towards the curriculum design & development. Categorization of the ratings are as follows: Strongly agree (5), Agree (4), Neutral (3), Disagree (2), Strongly disagree (1). The results are derived in terms of percentage of students with common views, average rating.

S.NO	Parameter	Strongly agree	Agree	Neutral	Disagree	Strongly disagree
1	Board of studies ensures that the latest and relevant programmes are being offered	67	33	0	0	0
2	Employability is given weightage in curriculum design and development	56	44	0	0	0
3	Teachers are given enough freedom to contribute their ideas on curriculum design and development freedom to contribute	89	11	0	0	0
4	System followed by the University for the design and development of curriculum is effective	78	22	0	0	0
5	Curriculum is updated from time to time	56	44	0	0	0
6	Representation from bussiness and industry in Boards of studies is helpful in designing and improving the course bussiness and industry	78	22	0	0	0

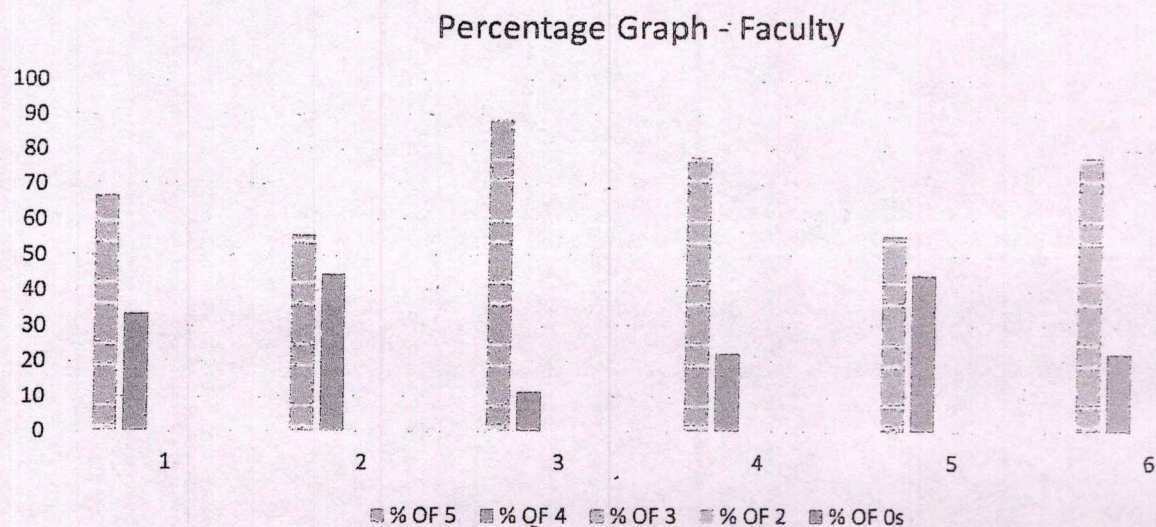


Figure 2: Faculty Feedback

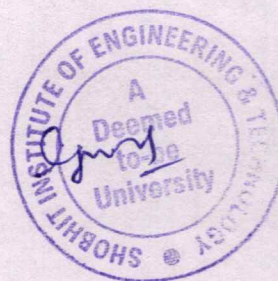
Feedback from Alumni

Feedback from the Alumni was collected in the view to receive inputs regarding the facilities and curriculum so that both can be updated accordingly. Categorization of the ratings are as follows: Strongly agree (5), Agree (4), Moderately agree (3), Disagree (2), Strongly disagree (1). The analysis was done on the bases of the percentage of the of response received for the various parameters.

S.No	Parameter	Strongly agree	Agree	Neutral	Disagree	Strongly disagree
1	I feel proud to have been a student of the University	87	13	0	0	0
2	The learning I had in the University has been useful in my career.	47	53	0	0	0
3	Developments in the University in the recent years are appreciative.	67	27	7	0	0
4	The new courses introduced met contemporary requirements.	40	60	0	0	0
5	The University is involving alumni in its activities.	73	13	13	0	0
6	The alumni have a role to play in academically strengthening the University.	67	27	7	0	0
7	The alumni have a role to play in financially strengthening the University.	53	27	20	0	0
8	University's initiatives to strengthen its network with industry, Business houses and other institutions is a good step and the alumni have a role to play in this initiative.	53	13	33	0	0

9	Alumni are tied to their alma mater not only for emotional reasons but also as a matter of responsibility towards their younger successors	60	33	7	0	0
---	--	----	----	---	---	---

McLain



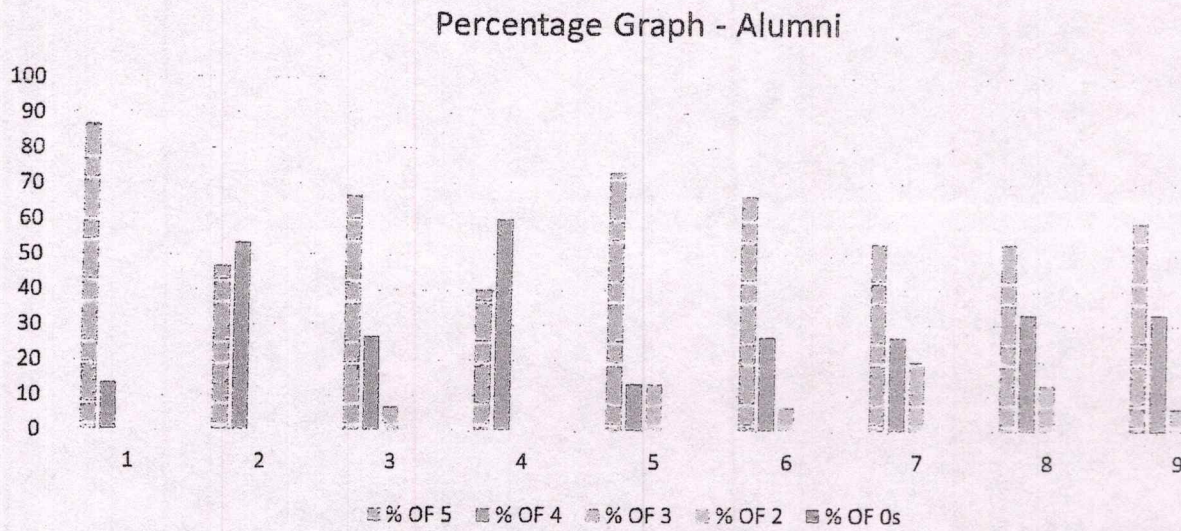
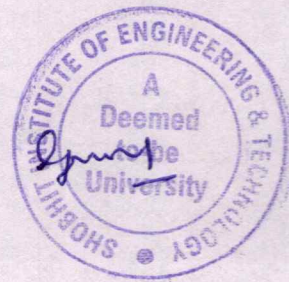


Figure 3: Alumni Feedback

[Handwritten Signature]

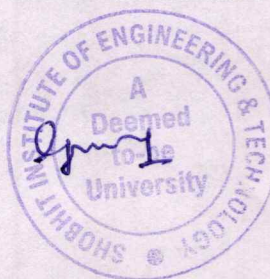


School of Law and Constitutional Studies

Program Name: LL.M.

Feedback statements by different Stakeholders

Sr. No.	Stakeholder	Stakeholder's Input
1.	Students	Syllabus is apt keeping in mind the regulatory framework of Indian Legal System.
2.	Faculty Members	Emphasis should be made to enhance the lawyering skills among students
3.	Alumni	New amendments should be added as and when required in the syllabus. Faculty helps students to understand concepts in a good manner.



[Signature]

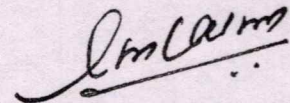
ACTION TAKEN ON FEEDBACK

Action Taken Report

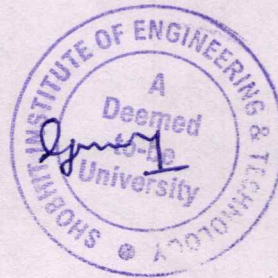
Date:

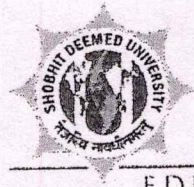
Program Name: LL.M.

Feedback of the stake holders was satisfactory. All stakeholders were satisfied with the syllabus with no immediate modifications required however timely revisions of new amendment needs to be enbibed in syllabus as and when required was suggested for enhancement of knowledge.



Dean/Director





Shobhit

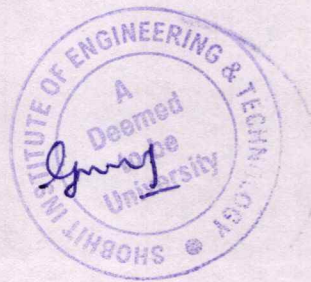
Institute of Engineering & Technology
Deemed to-be University

EDUCATION EMPOWERS

Feedback on Curriculum

M.B.A. (Business Administration)

Session 2021-2022



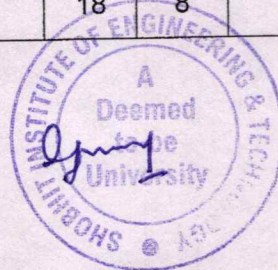
Feedback Analysis - M.B.A. (Business Administration)

The feedback from different stakeholders: students, faculty members, employers, parents and alumnae provide important inputs for the curriculum - enrichment. Students at the end of every academic session provide feedback on teaching learning process and curriculum aspect. Faculty members provide feedback on curriculum design and development. Feedback from the employers related to academic of the university. Feedback regarding the campus facilities and curriculum form alumnae and parents as well.

Feedback from students

The feedback was obtained on a scale of 1 to 5. The categorization of rating based on average score of different parameters is as follows: Excellent (5), Very good (4), Good (3), Average (2), Poor (1). The results are derived in terms of percentage of students with common views, average rating.

S. No.	Give your feedback on the following	Excellent	Very Good	Good	Average	Poor
1	Extent of syllabi covered in the class	48	10	10	2	0
2	Student Teacher Interaction	42	16	12	0	0
3	Teaching Methodology adopted by the teachers	40	21	9	0	0
4	Career Guidance and Assistance by Teachers	50	20	0	0	0
5	Integration of theory and Practical (if applicable)	46	12	9	3	0
6	Overall learning environment	40	25	5	0	0
7	Syllabus offered by the courses.	40	20	10	0	0
8	The design of the courses in terms of extra learning or self- learning.	42	15	12	1	0
9	Courses offering LAB components.	52	12	5	1	0
10	Depth of the syllabus of the courses in relation to the competencies expected by industry/current global scenarios.	49	17	3	1	0
11	Sequence of the courses provided in the curriculum.	42	18	8	2	0



Shobhit

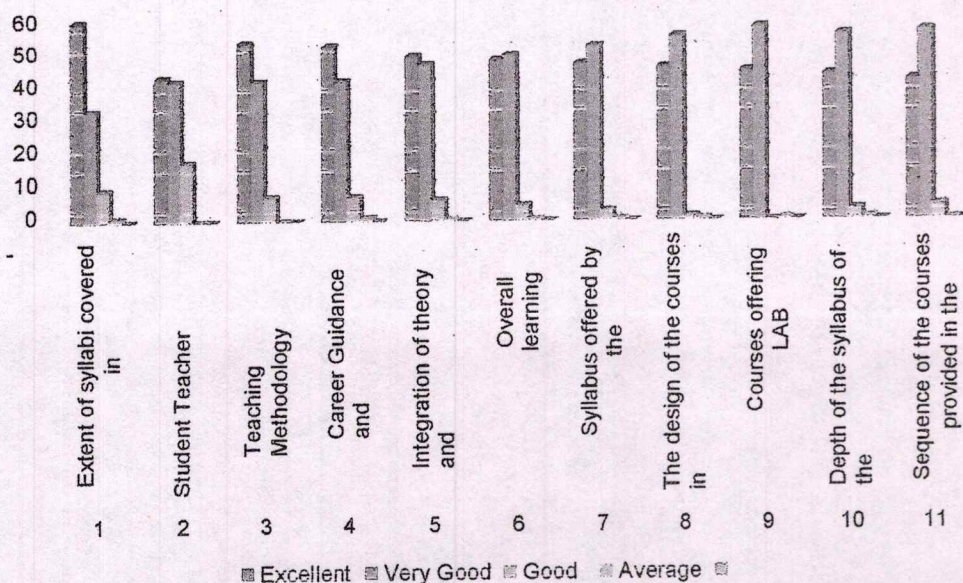
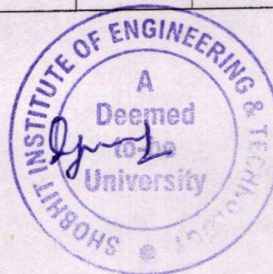


Figure1: Student feedback

Feedback from faculty members

Feedback from faculty members were collected for their views towards the curriculum design & development. Categorization of the ratings are as follows: Strongly agree (5), Agree (4), Neutral (3), Disagree (2), Strongly disagree (1).

	Strongly agree	Agree	Neutral	Disagree	Strongly disagree
Board of studies ensures that the latest and relevant programmes are being offered	46	12	10	2	0
Employability is given weightage in curriculum design and development	45	13	12	0	0
Teachers are given enough freedom to contribute their ideas on curriculum design and development	40	20	10	0	0
System followed by the University for the design and development of curriculum is effective	49	20	1	0	0
Curriculum is updated from time to time	42	12	11	5	0
Representation from business and industry in Boards of studies is helpful in designing and improving the course business and Industry	40	25	5	0	0



Signature

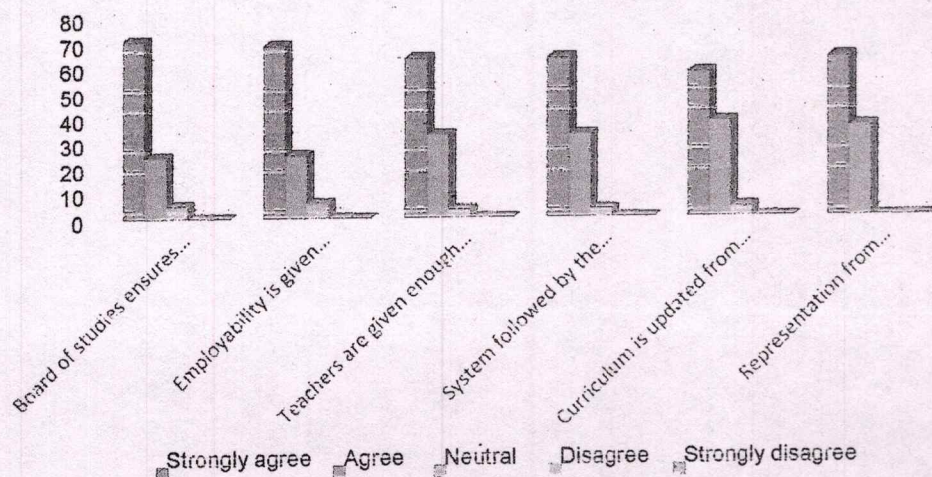


Figure2: Faculty Feedback Analysis

Feedback from Employers

Feedback from the employer were collected in the view to receive inputs regarding the industry requirements so that the curriculum is updated accordingly. Categorization of the ratings are as follows: Strongly agree (5), Agree (4), Moderately agree (3), Disagree (2), Strongly disagree (1). The analysis was done on the bases of the percentage of the of response received for the various parameters.

Questions	Strongl y Agree	Ag ree	Moderately Agree	Disagre e	Strongly Disagree
The University is progressing towards building the academia-industry gap by inculcating advanced techniques in teaching learning process as per the requirement of industry.	55	42	3	0	0
The University has provided very good infrastructure support and a logistic arrangement for holding the placement derives.	57	38	4	1	0
The University has sufficiently imparted the soft skills, analytical reasoning etc. inside its students.	59	34	6	1	0
The curriculum, teaching learning and evaluation process of SIET is matching with the recent industrial requirement.	61	32	7	0	0
The courses offered to provide a solution to issues relevant to Gender, Environment, and Sustainability.	63	28	9	1	0
The current syllabus is job-oriented, skill-based and value-oriented.	65	25	10	1	0
The curriculum is relevant for employability and job placements.	67	21	11	1	0



Signature



Shobhit
Institute of Engineering & Technology
Deemed to be University
EDUCATION EMPOWERS

Action Taken Report

Date: May 28, 2022

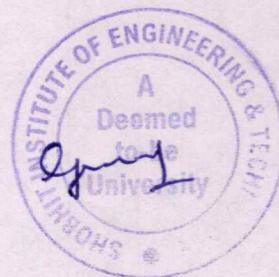
Program Name: M.B.A. (Business Administration)

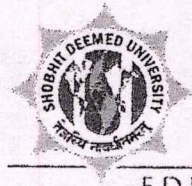
Feedback of the stake holders was satisfactory. All stakeholders were satisfied by the syllabus, no modifications and revisions were suggested.

Faculty members will guide and motivate the students for their active participation in the Activities and Initiatives of the department.

A handwritten signature in black ink, appearing to be 'Anurag', is written above the title 'Dean/Director'.

Dean/Director





Shobhit

Institute of Engineering & Technology

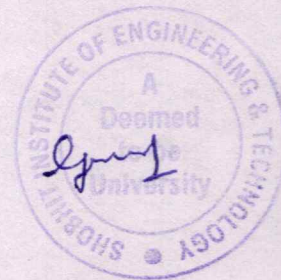
Deemed to-be University

EDUCATION EMPOWERS

Feedback on Curriculum

B.B.A. (Business Administration)

Session: 2021-22





Shobhit

Institute of Engineering & Technology
Deemed to be University

EDUCATION EMPOWERS

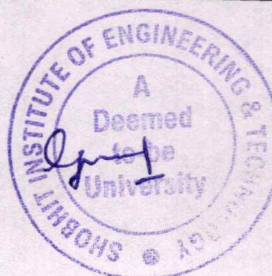
Feedback Analysis - B.B.A. (Business Administration)

The feedback from different stakeholders: students, faculty members, employers, parents and alumnae provide important inputs for the curriculum - enrichment. Students at the end of every academic session provide feedback on teaching learning process and curriculum aspect. Faculty members provide feedback on curriculum design and development. Feedback from the employers related to academic of the university. Feedback regarding the campus facilities and curriculum form alumnae and parents as well.

Feedback from students

The feedback was obtained on a scale of 1 to 5. The categorization of rating based on average score of different parameters is as follows: Excellent (5), Very good (4), Good (3), Average (2), Poor (1). The results are derived in terms of percentage of students with common views, average rating.

S. No.	Give your feedback on the following	Excellent	Very Good	Good	Average	Poor
1	Extent of syllabi covered in the class	57	38	4	1	0
2	Student Teacher Interaction	54	38	6	2	0
3	Teaching Methodology adopted by the teachers	50	42	6	2	0
4	Career Guidance and Assistance by Teachers	48	40	9	3	0
5	Integration of theory and Practical (if applicable)	45	44	11	0	0
6	Overall learning environment	40	45	14	1	0
7	Syllabus offered by the courses.	40	48	12	0	0
8	The design of the courses in terms of extra learning or self- learning.	36	50	12	2	0
9	Courses offering LAB components.	50	35	15		0
10	Depth of the syllabus of the courses in relation to the competencies expected by industry/current global scenarios.	35	52	12	1	0
11	Sequence of the courses provided in the curriculum.	30	50	20	0	0



Signature



Shobhit

Institute of Engineering & Technology
Deemed to be University

EDUCATION EMPOWERS

Feedback On Curriculum

B.Sc. (Agriculture)

(Session: -2021-22)



Feedback Analysis - B.Sc. (Agriculture)

The feedback from different stakeholders: students, faculty members, employers, parents and alumnae provide important inputs for the curriculum - enrichment. Students at the end of every academic session provide feedback on teaching learning process and curriculum aspect. Faculty members provide feedback on curriculum design and development. Feedback from the employers related to academic of the university. Feedback regarding the campus facilities and curriculum form alumnae and parents as well.

Feedback from students

The feedback was obtained on a scale of 1 to 5. The categorization of rating based on average score of different parameters is as follows: Excellent (5), Very good (4), Good (3), Average (2), Poor (1).

The results are derived in terms of percentage of students with common views, average rating.

S. No.	Give your feedback on the following	Excellent	Very Good	Good	Average	Poor
1	Extent of syllabi covered in the class	33	19	13	0	0
2	Student Teacher Interaction	34	24	7	0	0
3	Teaching Methodology adopted by the teachers	45	17	10	0	0
4	Career Guidance and Assistance by Teachers	43	9	13	0	0
5	Integration of theory and Practical (if applicable)	49	1	15	0	0
6	Overall learning environment	35	16	14	0	0
7	Syllabus offered by the courses.	30	15	16	0	0
8	The design of the courses in terms of extra learning or self- learning.	54	4	5	0	0
9	Courses offering LAB components.	34	14	17	0	0
10	Depth of the syllabus of the courses in relation to the competencies expected by industry/current global scenarios.	42	10	13	0	0
11	Sequence of the courses provided in the curriculum.	40	15	10	0	0

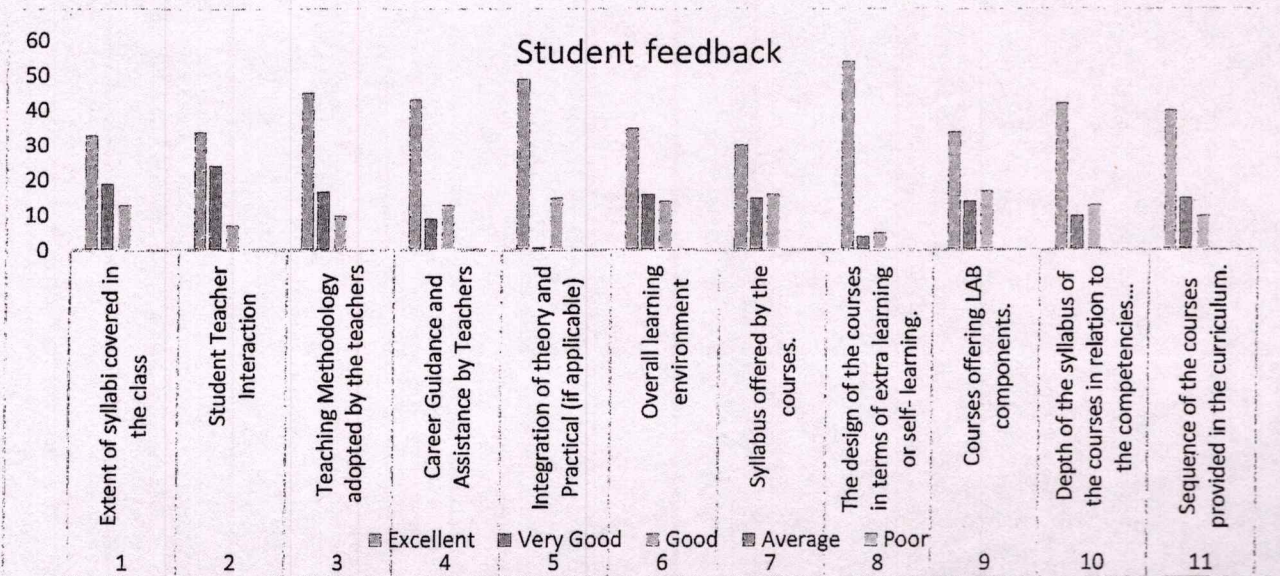


Figure1: Student feedback

Feedback from faculty members

Feedback from faculty members were collected for their views towards the curriculum design & development. Categorization of the ratings are as follows: Strongly agree (5), Agree (4), Neutral (3), Disagree (2), Strongly disagree (1).

S.N.	Give your feedback on the following	Strongly agree	Agree	Neutral	Disagree	Strongly disagree
1	Board of studies ensures that the latest and relevant programmes are being offered	13	4	2	0	0
2	Employability is given weightage in curriculum design and development	12	5	1	1	0
3	Teachers are given enough freedom to contribute their ideas on curriculum design and development	15	2	0	0	0
4	System followed by the University for the design and development of curriculum is effective	13	4	2	0	0
5	Curriculum is updated from time to time	14	1	4	0	0
6	Representation from business and industry in Boards of studies is helpful in designing and improving the course business and industry	15	3	1	0	0

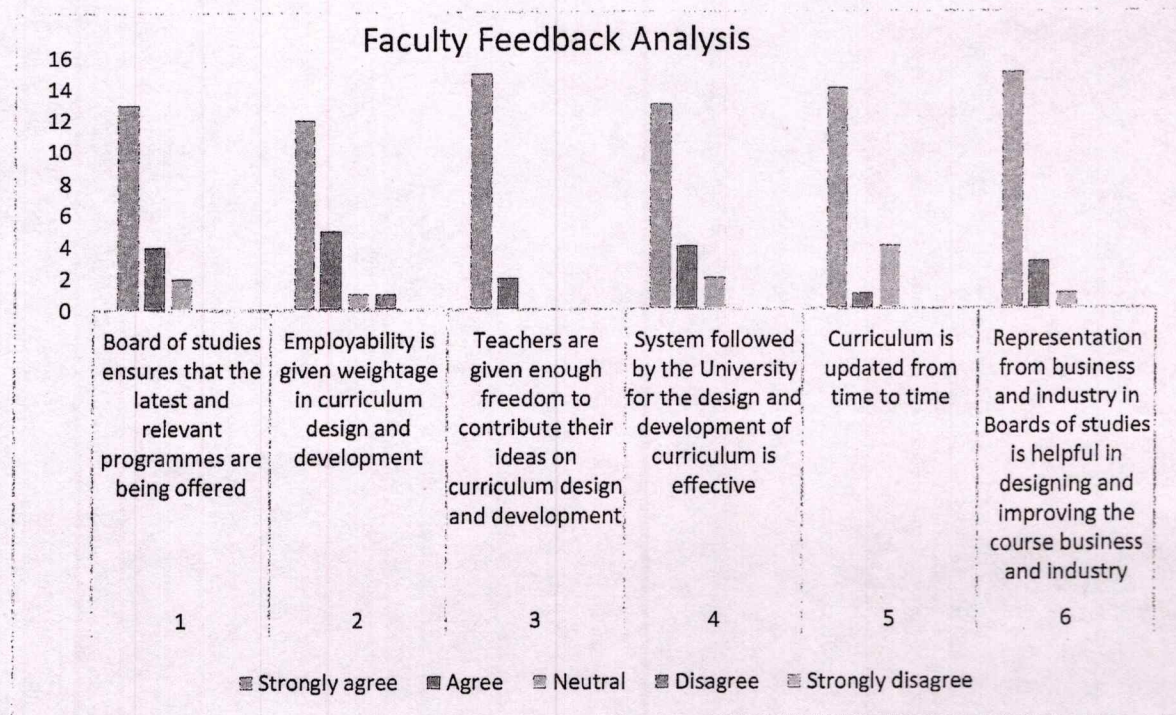
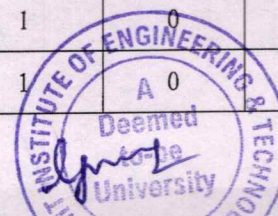


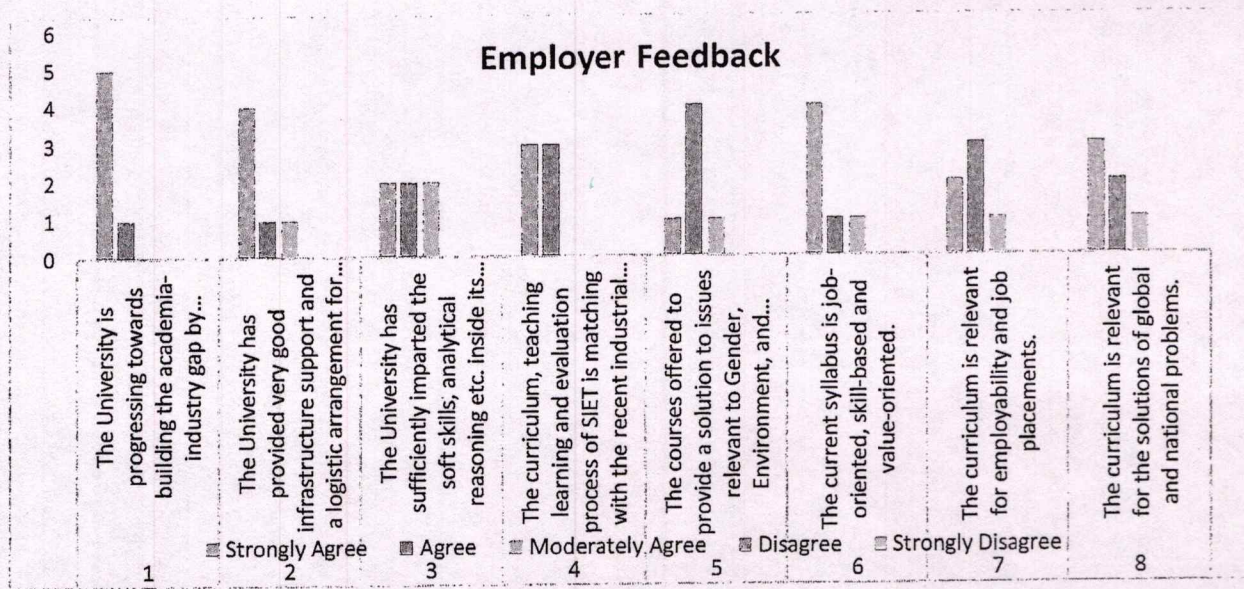
Figure2: Faculty Feedback Analysis

Feedback from Employers

Feedback from the employer were collected in the view to receive inputs regarding the industry requirements so that the curriculum is updated accordingly. Categorization of the ratings are as follows: Strongly agree (5), Agree (4), Moderately agree (3), Disagree (2), Strongly disagree (1). The analysis was done on the bases of the percentage of the of response received for the various parameters.

S. N.	Questions	Strongly Agree	Agree	Moderately Agree	Disagree	Strongly Disagree
1	The University is progressing towards building the academia-industry gap by inculcating advanced techniques in teaching learning process as per the requirement of industry.	5	1	0	0	0
2	The University has provided very good infrastructure support and a logistic arrangement for holding the placement derives.	4	1	1	0	0
3	The University has sufficiently imparted the soft skills, analytical reasoning etc. inside its students.	2	2	2	0	0
4	The curriculum, teaching learning and evaluation process of SIET is matching with the recent industrial requirement.	3	3	0	0	0
5	The courses offered to provide a solution to issues relevant to Gender, Environment, and Sustainability.	1	4	1	0	0
6	The current syllabus is job-oriented, skill-based and value-oriented.	4	1	1	0	0
7	The curriculum is relevant for employability and job placements.	2	3	1	0	0
8	The curriculum is relevant for the solutions of global and national problems.	3	2	1	0	0





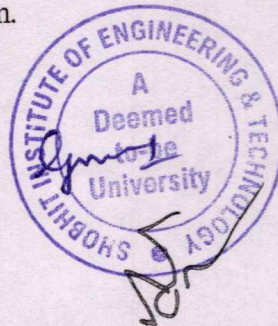
Figures: - 3 Employer Feedback

Alumni Feedback key observations

- Satisfied by the course curriculum no suggestions for any modifications.

Parent Feedback Key observations

- The parents were satisfied by the course curriculum.





Shobhit

Institute of Engineering & Technology
Deemed to be University

EDUCATION EMPOWERS

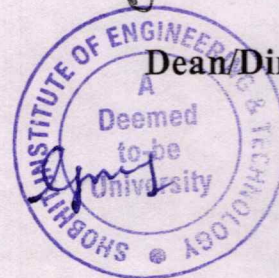
Action Taken Report

Date: Jun 09, 2022

Program Name: B.Sc. (Agriculture)

Feedback of the stake holders was satisfactory. All stakeholders were satisfied by the syllabus, no modifications and revisions were suggested.

Faculty members will guide and motivate the students for their active participation in the Field Work and Initiatives of the department.



Dean/Director



Shobhit

Institute of Engineering & Technology

Deemed to-be-University

EDUCATION EMPOWERS

Feedback On Curriculum

M. Tech. (AT)

(Session-2021-22)



AT

Feedback Analysis - M. Tech. (AT)

The feedback from different stakeholders: students, faculty members, employers, parents and alumnae provide important inputs for the curriculum - enrichment. Students at the end of every academic session provide feedback on teaching learning process and curriculum aspect. Faculty members provide feedback on curriculum design and development. Feedback from the employers related to academic of the university. Feedback regarding the campus facilities and curriculum form alumnae and parents as well.

Feedback from students

The feedback was obtained on a scale of 1 to 5. The categorization of rating based on average score of different parameters is as follows: Excellent (5), Very good (4), Good (3), Average (2), Poor (1). The results are derived in terms of percentage of students with common views, average rating.

S. No.	Give your feedback on the following	Excellent	Very Good	Good	Average	Poor
1	Extent of syllabi covered in the class	4	1	1	0	0
2	Student Teacher Interaction	3	2	1	0	0
3	Teaching Methodology adopted by the teachers	5	0	1	0	0
4	Career Guidance and Assistance by Teachers	4	1	1	0	0
5	Integration of theory and Practical (if applicable)	2	1	3	0	0
6	Overall learning environment	4	2	0	0	0
7	Syllabus offered by the courses.	3	2	1	0	0
8	The design of the courses in terms of extra learning or self- learning.	2	4	0	0	0
9	Courses offering LAB components.	5	1	0	0	0
10	Depth of the syllabus of the courses in relation to the competencies expected by industry/current global scenarios.	4	2	0	0	0
11	Sequence of the courses provided in the curriculum.	3	2	1	0	0



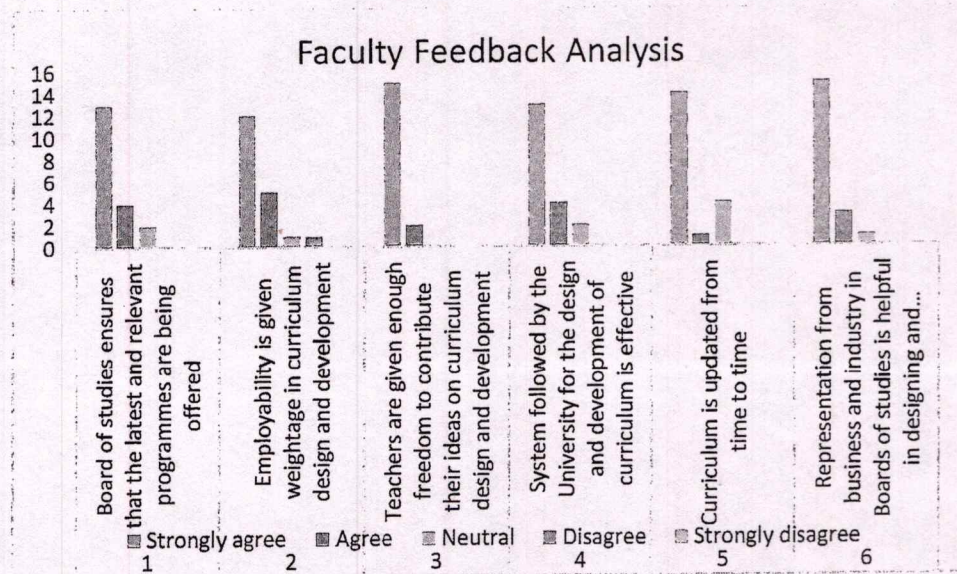
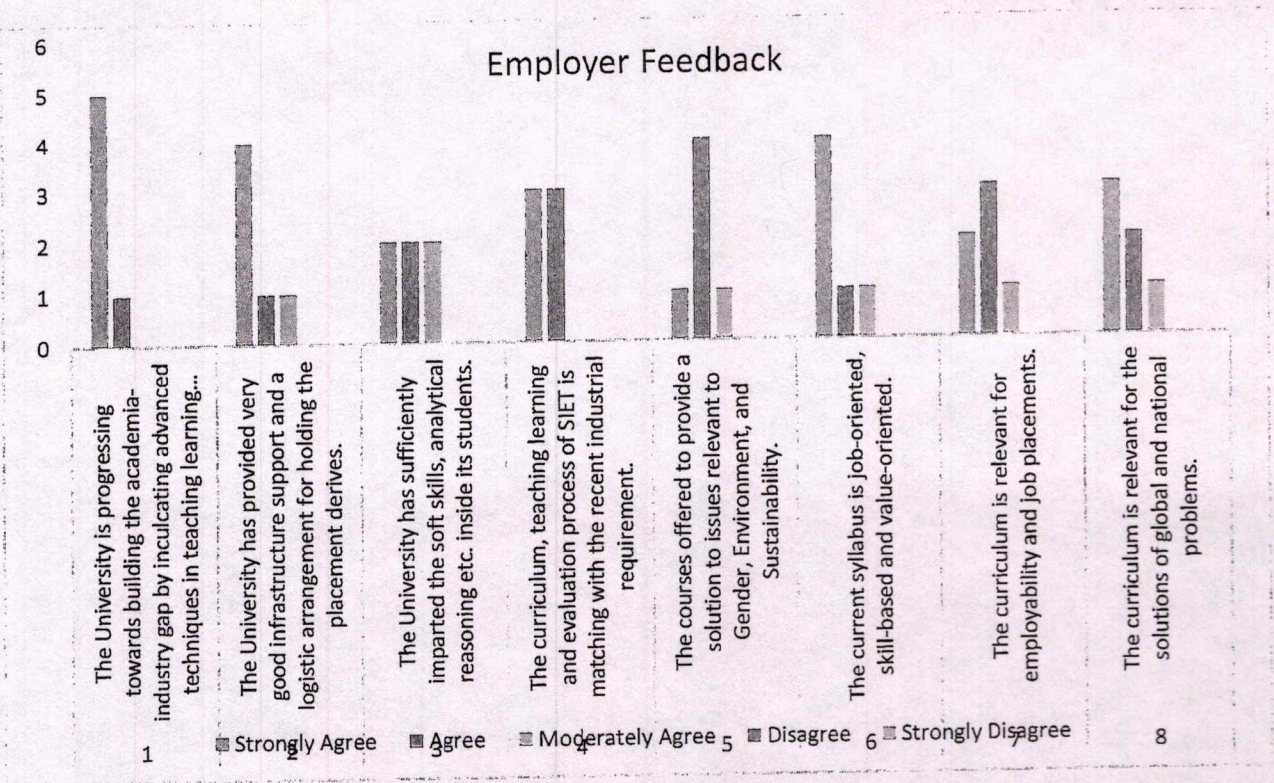


Figure2: Faculty Feedback Analysis

Feedback from Employers

Feedback from the employer were collected in the view to receive inputs regarding the industry requirements so that the curriculum is updated accordingly. Categorization of the ratings are as follows: Strongly agree (5), Agree (4), Moderately agree (3), Disagree (2), Strongly disagree (1). The analysis was done on the bases of the percentage of the of response received for the various parameters.

S. N.	Questions	Strongly Agree	Agree	Moderately Agree	Disagree	Strongly Disagree
1	The University is progressing towards building the academia-industry gap by inculcating advanced techniques in teaching learning process as per the requirement of industry.	5	1	0	0	0
2	The University has provided very good infrastructure support and a logistic arrangement for holding the placement derives.	4	1	1	0	0
3	The University has sufficiently imparted the soft skills, analytical reasoning etc. inside its students.	2	2	2	0	0
4	The curriculum, teaching learning and evaluation process of SIET is matching with the recent industrial requirement.	3	3	0	0	0
5	The courses offered to provide a solution to issues relevant to Gender, Environment, and Sustainability.	1	4	1	0	0
6	The current syllabus is job-oriented, skill-based and value-oriented.	4	1	1	0	0
7	The curriculum is relevant for employability and job placements.	2	3	1	0	0
	The curriculum is relevant for					



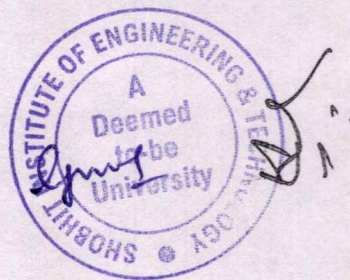
Figures 3: Employer Feedback

Alumni Feedback key observations

- Satisfied by the course curriculum no suggestions for any modifications.

Parent Feedback Key observations

- The parents were satisfied by the course curriculum.





Shobhit
Institute of Engineering & Technology
Deemed to be University
EDUCATION EMPOWERS

Action Taken Report

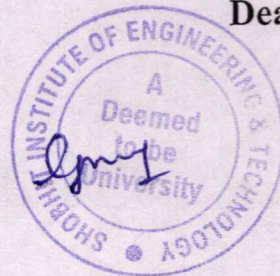
Date: Jun 9, 2022

Program Name: M. Tech. (AT)

Feedback of the stake holders was satisfactory. All stakeholders were satisfied by the syllabus, no modifications and revisions were suggested.

Faculty members will guide and motivate the students for their active participation in the Field Work and Initiatives of the department.

Dean/Director





Shobhit

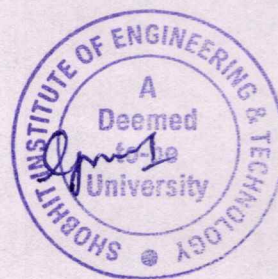
Institute of Engineering & Technology
Deemed to be University

EDUCATION EMPOWERS

Feedback On Curriculum

B.Tech. (AT)

(Session -2021-22)



Dr. N.C.

Feedback Analysis - B.Tech. (AT)

The feedback from different stakeholders: students, faculty members, employers, parents and alumnae provide important inputs for the curriculum - enrichment. Students at the end of every academic session provide feedback on teaching learning process and curriculum aspect. Faculty members provide feedback on curriculum design and development. Feedback from the employers related to academic of the university. Feedback regarding the campus facilities and curriculum form alumnae and parents as well.

Feedback from students

The feedback was obtained on a scale of 1 to 5. The categorization of rating based on average score of different parameters is as follows: Excellent (5), Very good (4), Good (3), Average (2), Poor (1). The results are derived in terms of percentage of students with common views, average rating.

S. No.	Give your feedback on the following	Excellent	Very Good	Good	Average	Poor
1	Extent of syllabi covered in the class	21	11	2	0	0
2	Student Teacher Interaction	23	7	4	0	0
3	Teaching Methodology adopted by the teachers	25	6	3	0	0
4	Career Guidance and Assistance by Teachers	20	13	1	0	0
5	Integration of theory and Practical (if applicable)	26	5	3	0	0
6	Overall learning environment	21	13	0	0	0
7	Syllabus offered by the courses.	27	6	1	0	0
8	The design of the courses in terms of extra learning or self- learning.	18	16	0	0	0
9	Courses offering LAB components.	16	15	5	0	0
10	Depth of the syllabus of the courses in relation to the competencies expected by industry/current global scenarios.	24	10	0	0	0
11	Sequence of the courses provided in the curriculum.	27	6	1	0	0

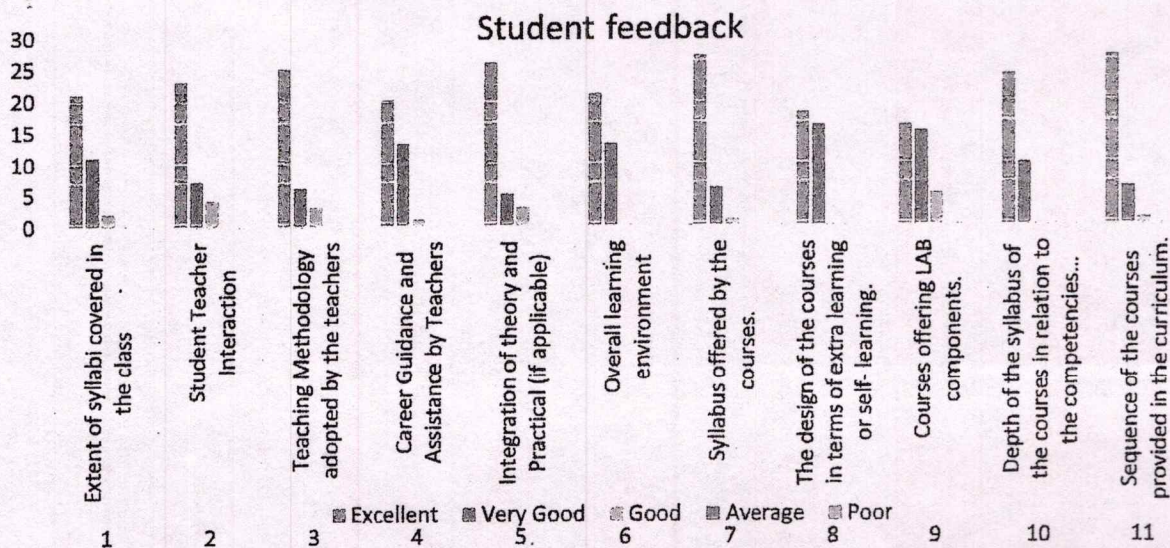
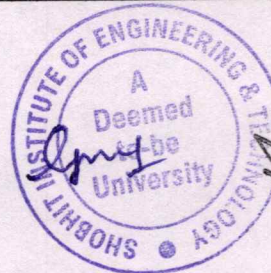


Figure1: Student feedback

Feedback from faculty members

Feedback from faculty members were collected for their views towards the curriculum design & development. Categorization of the ratings are as follows: Strongly agree (5), Agree (4), Neutral (3), Disagree (2), Strongly disagree (1).

S.N.	Give your feedback on the following	Strongly agree	Agree	Neutral	Disagree	Strongly disagree
1	Board of studies ensures that the latest and relevant programmes are being offered	13	4	2	0	0
2	Employability is given weightage in curriculum design and development	12	5	1	1	0
3	Teachers are given enough freedom to contribute their ideas on curriculum design and development	15	2	0	0	0
4	System followed by the University for the design and development of curriculum is effective	13	4	2	0	0
5	Curriculum is updated from time to time	14	1	4	0	0
6	Representation from business and industry in Boards of studies is helpful in designing and improving the course business and industry	15	3	1	0	0



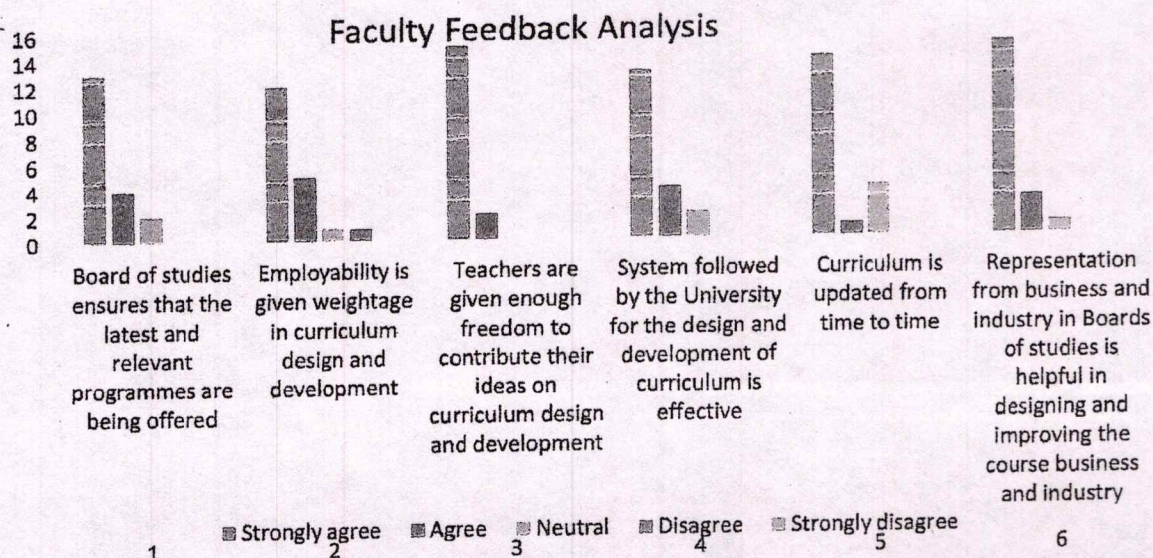
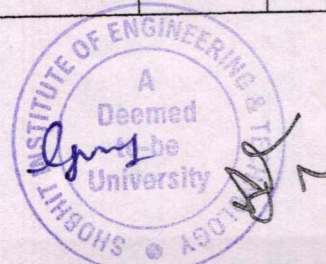


Figure2: Faculty Feedback Analysis

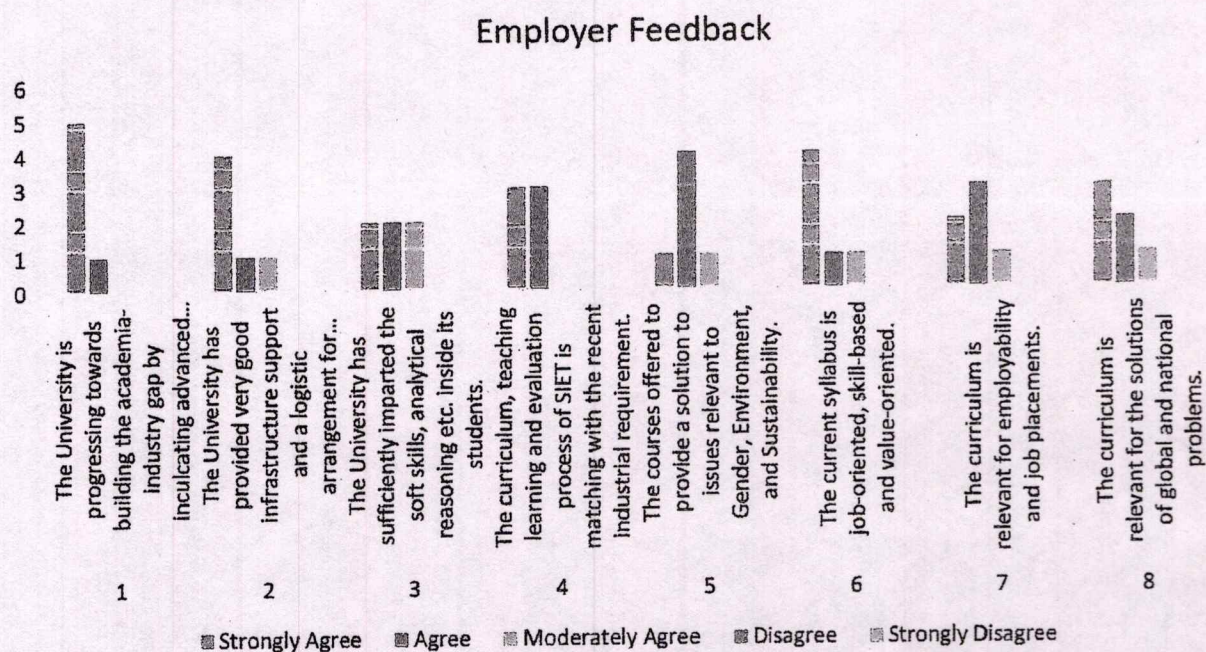
Feedback from Employers

Feedback from the employer were collected in the view to receive inputs regarding the industry requirements so that the curriculum is updated accordingly. Categorization of the ratings are as follows: Strongly agree (5), Agree (4), Moderately agree (3), Disagree (2), Strongly disagree (1). The analysis was done on the bases of the percentage of the of response received for the various parameters.

S. N.	Questions	Strongly Agree	Agree	Moderately Agree	Disagree	Strongly Disagree
1	The University is progressing towards building the academia-industry gap by inculcating advanced techniques in teaching learning process as per the requirement of industry.	5	1	0	0	0
2	The University has provided very good infrastructure support and a logistic arrangement for holding the placement derives.	4	1	1	0	0
3	The University has sufficiently imparted the soft skills, analytical reasoning etc. inside its students.	2	2	2	0	0
4	The curriculum, teaching learning and evaluation process of SIET is matching with the recent industrial requirement.	3	3	0	0	0
5	The courses offered to provide a solution to issues relevant to Gender, Environment, and Sustainability.	1	4	1	0	0
6	The current syllabus is job-oriented, skill-based and value-oriented.	4	1	1	0	0
7	The curriculum is relevant for employability and job placements.	2	3	1	0	0
8	The curriculum is relevant for the solutions of global and national problems.	3	2	1	0	0



Effectiveness of curriculum for the development of entrepreneurship.	54	31	13	2	0
The Internship helps in placements.	89	11	0	0	0



Figures3: Employer Feedback

Alumni Feedback key observations

- Satisfied by the course curriculum no suggestions for any modifications.

Parent Feedback Key observations

- The parents were satisfied by the course curriculum.



25/7



Shobhit

Institute of Engineering & Technology
Deemed to be University

EDUCATION EMPOWERS

Action Taken Report

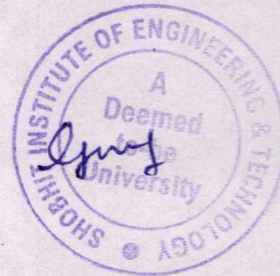
Date: Jun 9, 2022

Program Name: B.Tech. (AT)

Feedback of the stake holders was satisfactory. All stakeholders were satisfied by the syllabus, no modifications and revisions were suggested.

Faculty members will guide and motivate the students for their active participation in the Field Work and Initiatives of the department.

Dean/Director





Shobhit

Institute of Engineering & Technology
Deemed to-be-University

EDUCATION EMPOWERS

Feedback On Curriculum

M.Sc. (Biotechnology)

Session (2021-22)



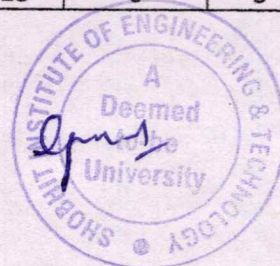
Feedback Analysis - MSc. (Biotechnology)

The feedback from different stakeholders: students, faculty members, employers, parents and alumnae provide important inputs for the curriculum - enrichment. Students at the end of every academic session provide feedback on teaching learning process and curriculum aspect. Faculty members provide feedback on curriculum design and development. Feedback from the employers related to academic of the university. Feedback regarding the campus facilities and curriculum form alumnae and parents as well.

Feedback from students

The feedback was obtained on a scale of 1 to 5. The categorization of rating based on average score of different parameters is as follows: Excellent (5), Very good (4), Good (3), Average (2), Poor (1). The results are derived in terms of percentage of students with common views, average rating.

S. No.	Give your feedback on the following	Excellent	Very Good	Good	Average	Poor
1	Extent of syllabi covered in the class	59	18	6	12	6
2	Student Teacher Interaction	53	18	18	12	0
3	Teaching Methodology adopted by the teachers	59	29	12	0	0
4	Career Guidance and Assistance by Teachers	59	18	6	12	6
5	Integration of theory and Practical (if applicable)	47	18	24	12	0
6	Overall learning environment	41	35	12	6	6
7	Syllabus offered by the courses.	65	12	6	12	6
8	The design of the courses in terms of extra learning or self- learning.	35	41	12	6	6
9	Courses offering LAB components.	65	29	0	6	0
10	Depth of the syllabus of the courses in relation to the competencies expected by industry/current global scenarios.	59	12	18	6	6
11	Sequence of the courses provided in the curriculum.	65	12	18	6	0



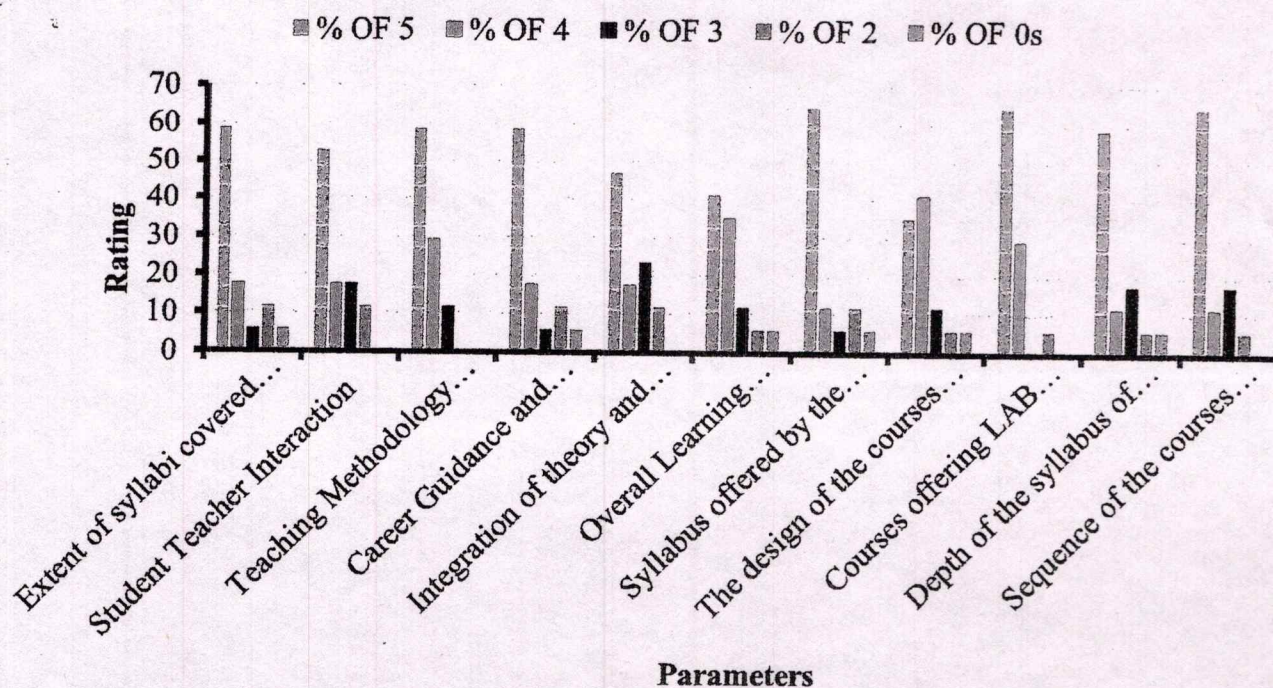
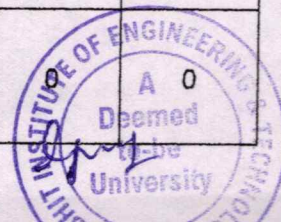


Figure1: Student feedback

Feedback from faculty members

Feedback from faculty members were collected for their views towards the curriculum design & development. Categorization of the ratings are as follows: Strongly agree (5), Agree (4), Neutral (3), Disagree (2), Strongly disagree (1).

	Strongly agree	Agree	Neutral	Disagree	Strongly disagree
Board of studies ensures that the latest and relevant programmes are being offered	79	14	7	0	0
Employability is given weightage in curriculum design and development	79	14	7	0	0
Teachers are given enough freedom to contribute their ideas on curriculum design and development	71	21	7	0	0
System followed by the University for the design and development of curriculum is effective	36	57	7	0	0
Curriculum is updated from time to time	64	29	7	0	0
Representation from business and industry in Boards of studies is helpful in designing and improving the course business and industry	79	21	0	0	0



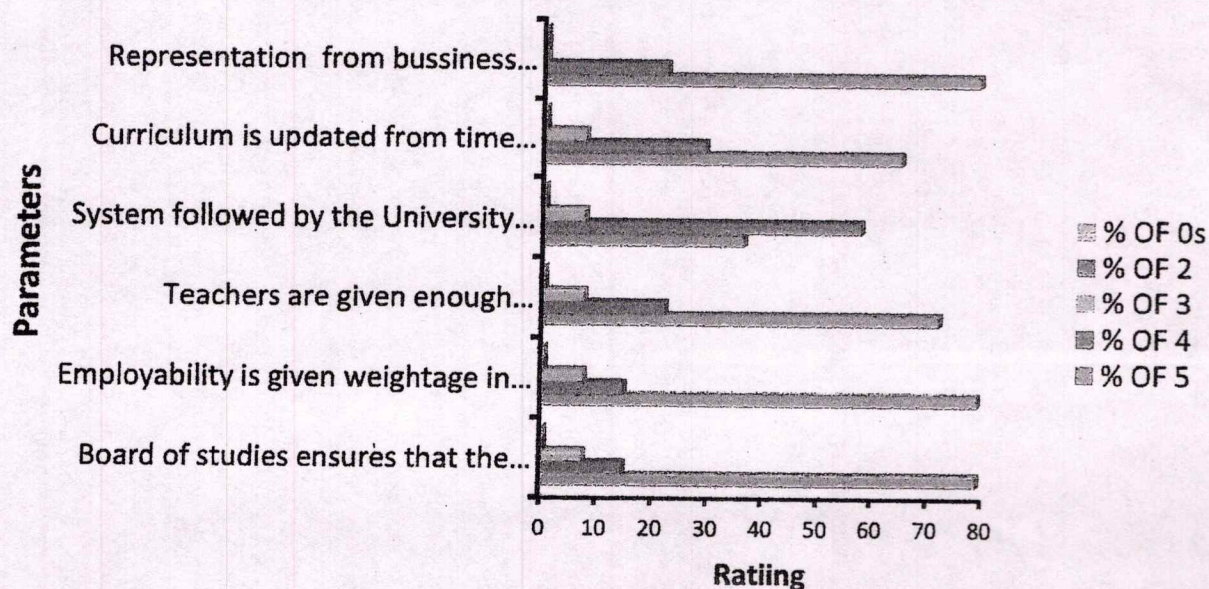


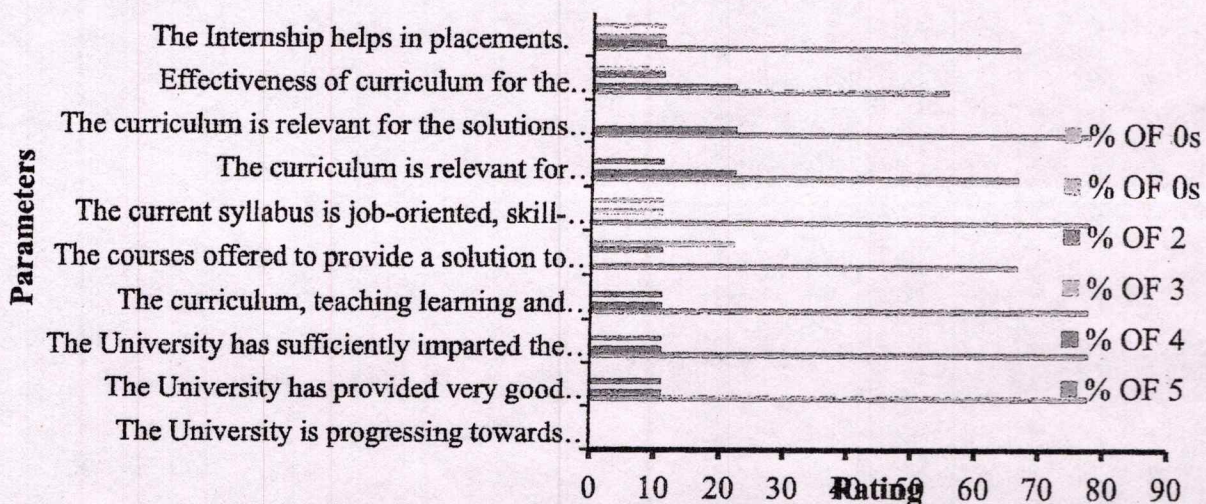
Figure2: Faculty Feedback Analysis

Feedback from Employers

Feedback from the employer were collected in the view to receive inputs regarding the industry requirements so that the curriculum is updated accordingly. Categorization of the ratings are as follows: Strongly agree (5), Agree (4), Moderately agree (3), Disagree (2), Strongly disagree (1). The analysis was done on the bases of the percentage of the of response received for the various parameters.

Questions	Strongly Agree	Agree	Moderately Agree	Disagree	Strongly Disagree
The University is progressing towards building the academia-industry gap by inculcating advanced techniques in teaching learning process as per the requirement of industry.	0	0	0	0	0
The University has provided very good infrastructure support and a logistic arrangement for holding the placement derives.	78	11	0	11	0
The University has sufficiently imparted the softskills, analytical reasoning etc. inside its students.	78	11	0	11	0
The curriculum, teaching learning and evaluation process of SIET is matching with the recent industrialrequirement.	78	11	0	11	0
The courses offered to provide a solution to issuesrelevant to Gender, Environment, and Sustainability.	67	0	0	11	22
The current syllabus is job-oriented, skill-based and value-oriented.	78	0	11	0	11
The curriculum is relevant for	78	11	0	11	0

Effectiveness of curriculum for the development of entrepreneurship.	71	14	14	0	0
The Internship helps in placements.	73	11	16	0	0



Figures3: Employer Feedback

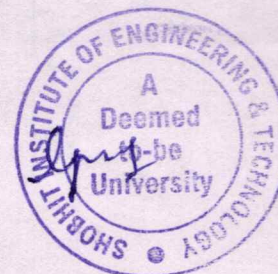
Alumni Feedback key

Observations

- Satisfied by the course curriculum no suggestions for any modifications.

Parent Feedback Key observations

- The parents were satisfied by the course curriculum.




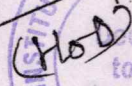

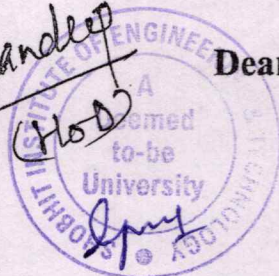
Action Taken Report

Date: May 27, 2022

Program Name: B.Tech. (Biotechnology)

Feedback of the stake holders was satisfactory. All stakeholders were satisfied by the syllabus, no modifications and revisions were suggested.

Faculty members will guide and motivate the students for their active participation in the Extension activities and Initiatives of the department.




**Dean/Director**



Shobhit

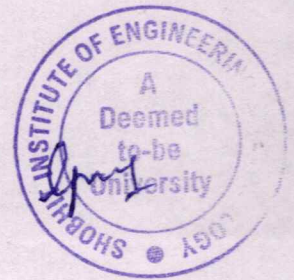
Institute of Engineering & Technology
Deemed to-be-University

EDUCATION EMPOWERS

Feedback On Curriculum

M.Tech. (Biotechnology)

Session 2021-22



Feedback Analysis – M.Tech. (Biotechnology)

The feedback from different stakeholders: students, faculty members, employers, parents and alumnae provide important inputs for the curriculum - enrichment. Students at the end of every academic session provide feedback on teaching learning process and curriculum aspect. Faculty members provide feedback on curriculum design and development. Feedback from the employers related to academic of the university. Feedback regarding the campus facilities and curriculum form alumnae and parents as well.

Feedback from students

The feedback was obtained on a scale of 1 to 5. The categorization of rating based on average score of different parameters is as follows: Excellent (5), Very good (4), Good (3), Average (2), Poor (1). The results are derived in terms of percentage of students with common views, average rating.

S. No.	Give your feedback on the following	Excellent	Very Good	Good	Average	Poor
1	Extent of syllabi covered in the class	53	12	0	6	0
2	Student Teacher Interaction	47	6	12	6	0
3	Teaching Methodology adopted by the teachers	47	18	6	0	0
4	Career Guidance and Assistance by Teachers	59	6	0	6	0
5	Integration of theory and Practical (if applicable)	41	6	12	6	6
6	Overall learning environment	41	18	6	6	0
7	Syllabus offered by the courses.	47	6	6	6	6
8	The design of the courses in terms of extra learning or self- learning.	53	12	6	0	0
9	Courses offering LAB components.	53	6	0	12	0
10	Depth of the syllabus of the courses in relation to the competencies expected by industry/current global scenarios.	47	6	12	6	0
11	Sequence of the courses provided in the curriculum.	65	0	6	0	0



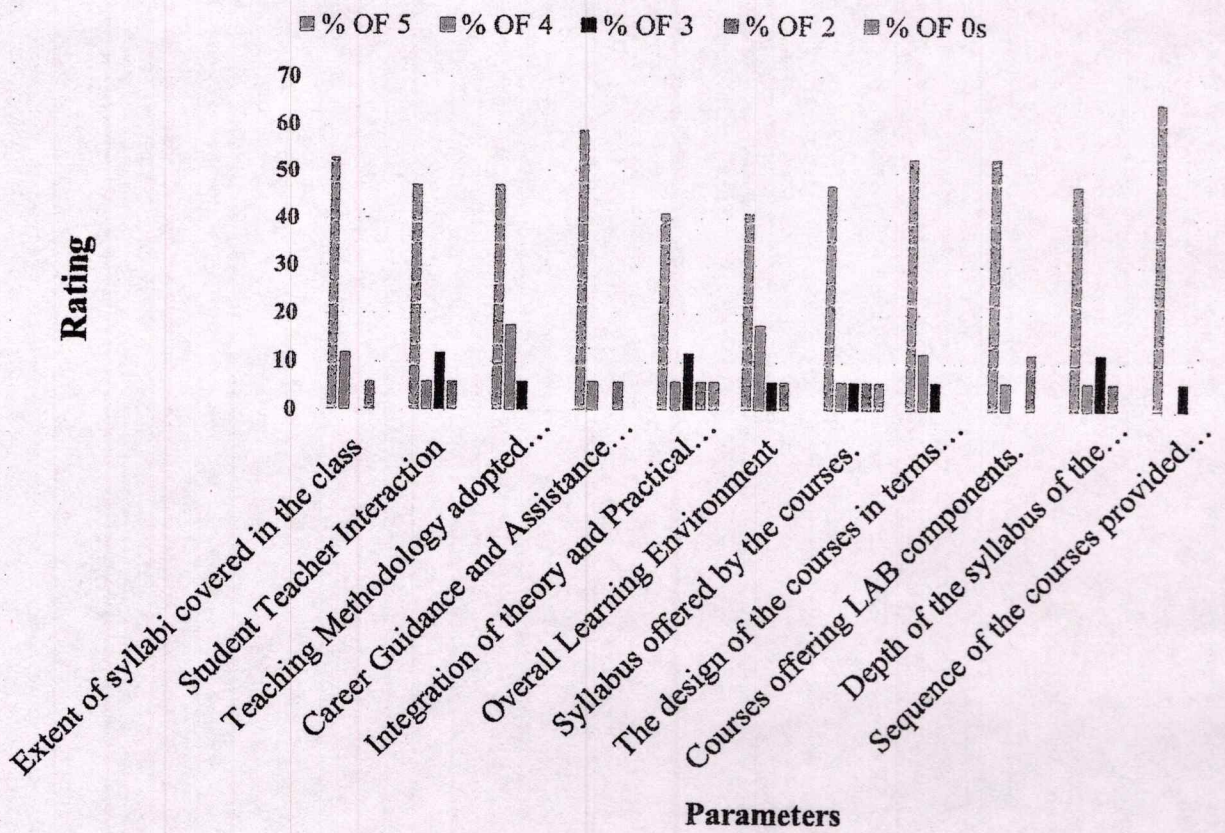


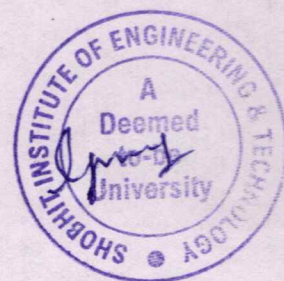
Figure1: Student feedback



Feedback from faculty members

Feedback from faculty members were collected for their views towards the curriculum design & development. Categorization of the ratings are as follows: Strongly agree (5), Agree (4), Neutral (3), Disagree (2), Strongly disagree (1).

	Strongly agree	Agree	Neutral	Disagree	Strongly disagree
Board of studies ensures that the latest and relevant programmes are being offered	79	14	7	0	0
Employability is given weightage in curriculum design and development	79	14	7	0	0
Teachers are given enough freedom to contribute their ideas on curriculum design and development	71	21	7	0	0
System followed by the University for the design and development of curriculum is effective	36	57	7	0	0
Curriculum is updated from time to time	64	29	7	0	0
Representation from business and industry in Boards of studies is helpful in designing and improving the course business and industry	79	21	0	0	0



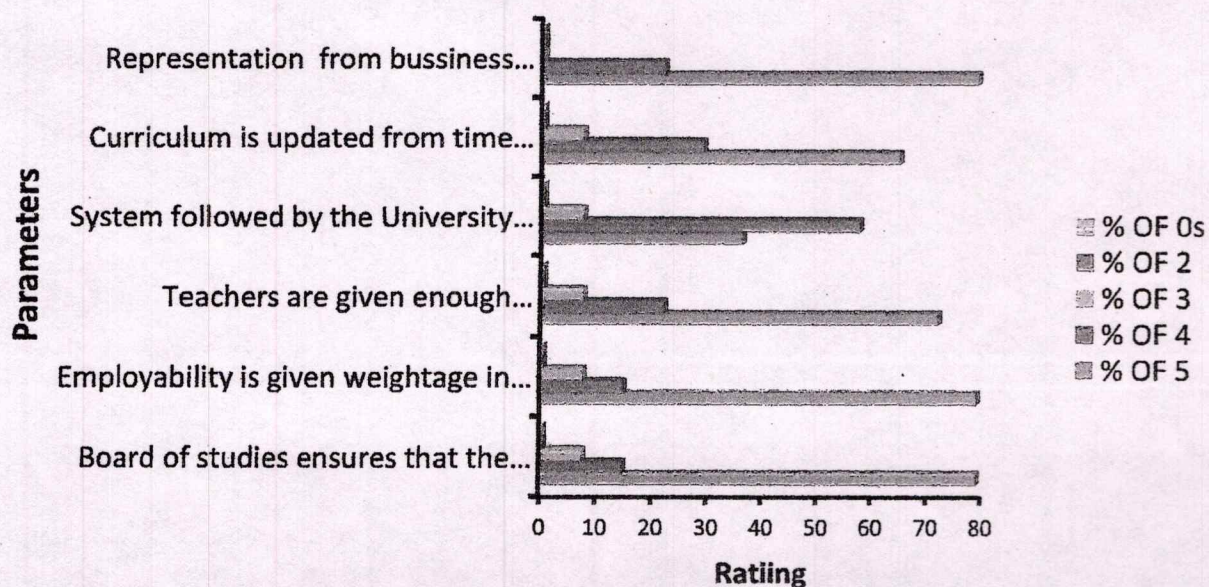


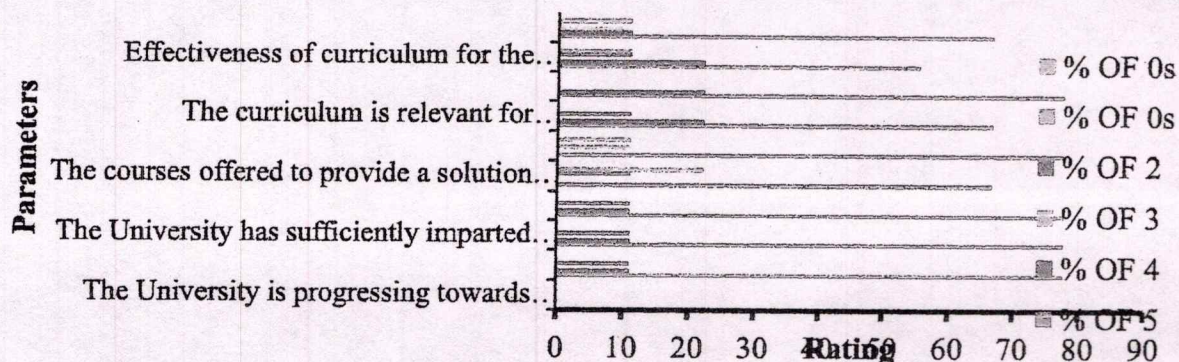
Figure2: Faculty Feedback Analysis

Feedback from Employers

Feedback from the employer were collected in the view to receive inputs regarding the industry requirements so that the curriculum is updated accordingly. Categorization of the ratings are as follows: Strongly agree (5), Agree (4), Moderately agree (3), Disagree (2), Strongly disagree (1). The analysis was done on the bases of the percentage of the of response received for the various parameters.

Questions	Strongly Agree	Agree	Moderately Agree	Disagree	Strongly Disagree
The University is progressing towards building the academia-industry gap by inculcating advanced techniques in teaching learning process as per the requirement of industry.	0	0	0	0	0
The University has provided very good infrastructure support and a logistic arrangement for holding the placement derives.	78	11	0	11	0
The University has sufficiently imparted the softskills, analytical reasoning etc. inside its students.	78	11	0	11	0
The curriculum, teaching learning and evaluation process of SIET is matching with the recent industrialrequirement.	78	11	0	11	0
The courses offered to provide a solution to issuesrelevant to Gender, Environment, and Sustainability.	67	0	0	11	22
The current syllabus is job-oriented, skill-based and value-oriented.	78	0	11	0	11
The curriculum is relevant for	78	11	0	0	0

Effectiveness of curriculum for the development of entrepreneurship.	71	14	14	0	0
The Internship helps in placements.	73	11	16	0	0



Figures3: Employer Feedback

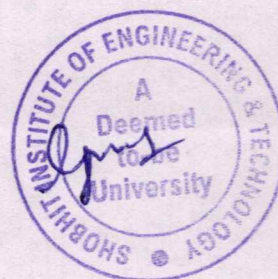
Alumni Feedback key

Observations

- Satisfied by the course curriculum no suggestions for any modifications.

Parent Feedback Key observations

- The parents were satisfied by the course curriculum.



Action Taken Report

Date: May 27, 2022

Program Name: B.Tech. (Biotechnology)

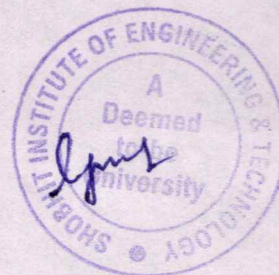
Feedback of the stake holders was satisfactory. All stakeholders were satisfied by the syllabus, no modifications and revisions were suggested.

Faculty members will guide and motivate the students for their active participation in the Extension activities and Initiatives of the department.



H.O.D

Dean/Director





Shobhit

Institute of Engineering & Technology

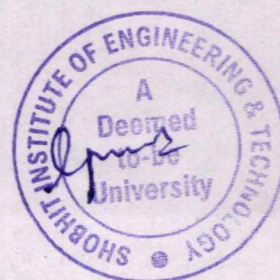
Deemed to-be-University

EDUCATION EMPOWERS

Feedback On Curriculum

B.Tech. (Biotechnology)

Session 2021-2022



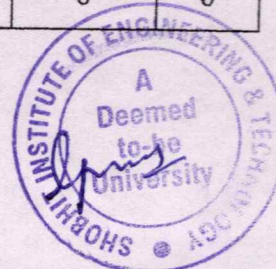
Feedback Analysis - B.Tech. (Biotechnology)

The feedback from different stakeholders: students, faculty members, employers, parents and alumnae provide important inputs for the curriculum - enrichment. Students at the end of every academic session provide feedback on teaching learning process and curriculum aspect. Faculty members provide feedback on curriculum design and development. Feedback from the employers related to academic of the university. Feedback regarding the campus facilities and curriculum form alumnae and parents as well.

Feedback from students

The feedback was obtained on a scale of 1 to 5. The categorization of rating based on average score of different parameters is as follows: Excellent (5), Very good (4), Good (3), Average (2), Poor (1). The results are derived in terms of percentage of students with common views, average rating.

S. No.	Give your feedback on the following	Excellent	Very Good	Good	Average	Poor
1	Extent of syllabi covered in the class	53	43	3	3	3
2	Student Teacher Interaction	48	53	5	0	0
3	Teaching Methodology adopted by the teachers	55	43	0	0	0
4	Career Guidance and Assistance by Teachers	50	45	3	1	0
5	Integration of theory and Practical (if applicable)	58	40	3	3	3
6	Overall learning environment	53	45	0	0	0
7	Syllabus offered by the courses.	43	58	3	0	0
8	The design of the courses in terms of extra learning or self- learning.	38	58	0	0	3
9	Courses offering LAB components.	68	33	0	3	0
10	Depth of the syllabus of the courses in relation to the competencies expected by industry/current global scenarios.	80	20	0	0	0
11	Sequence of the courses provided in the curriculum.	50	43	0	0	0



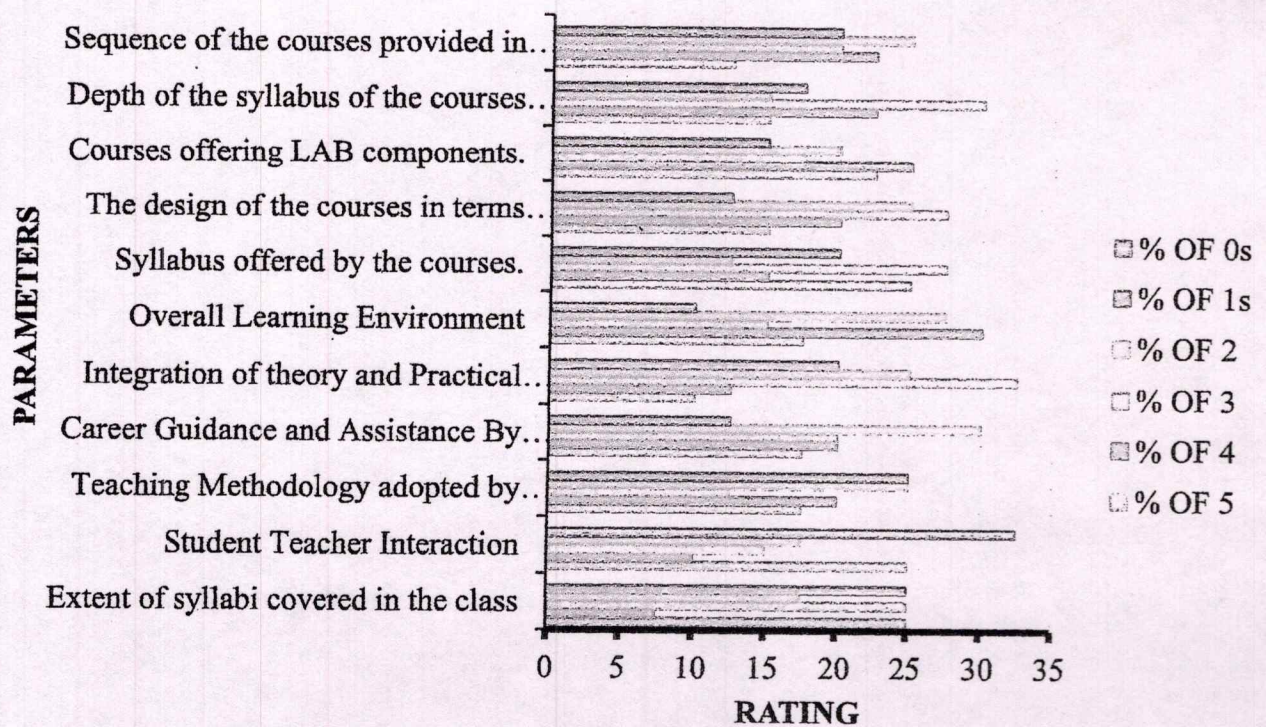
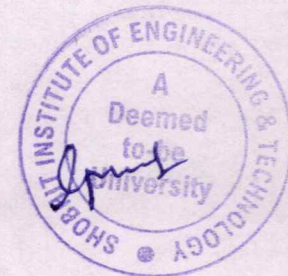


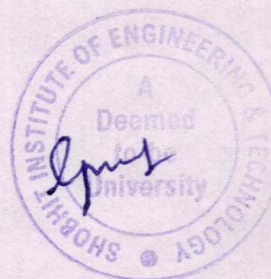
Figure1: Student feedback



Feedback from faculty members

Feedback from faculty members were collected for their views towards the curriculum design & development. Categorization of the ratings are as follows: Strongly agree (5), Agree (4), Neutral (3), Disagree (2), Strongly disagree (1).

	Strongly agree	Agree	Neutral	Disagree	Strongly disagree
Board of studies ensures that the latest and relevant programmes are being offered	79	14	7	0	0
Employability is given weightage in curriculum design and development	79	14	7	0	0
Teachers are given enough freedom to contribute their ideas on curriculum design and development	71	21	7	0	0
System followed by the University for the design and development of curriculum is effective	36	57	7	0	0
Curriculum is updated from time to time	64	29	7	0	0
Representation from business and industry in Boards of studies is helpful in designing and improving the course business and industry	79	21	0	0	0



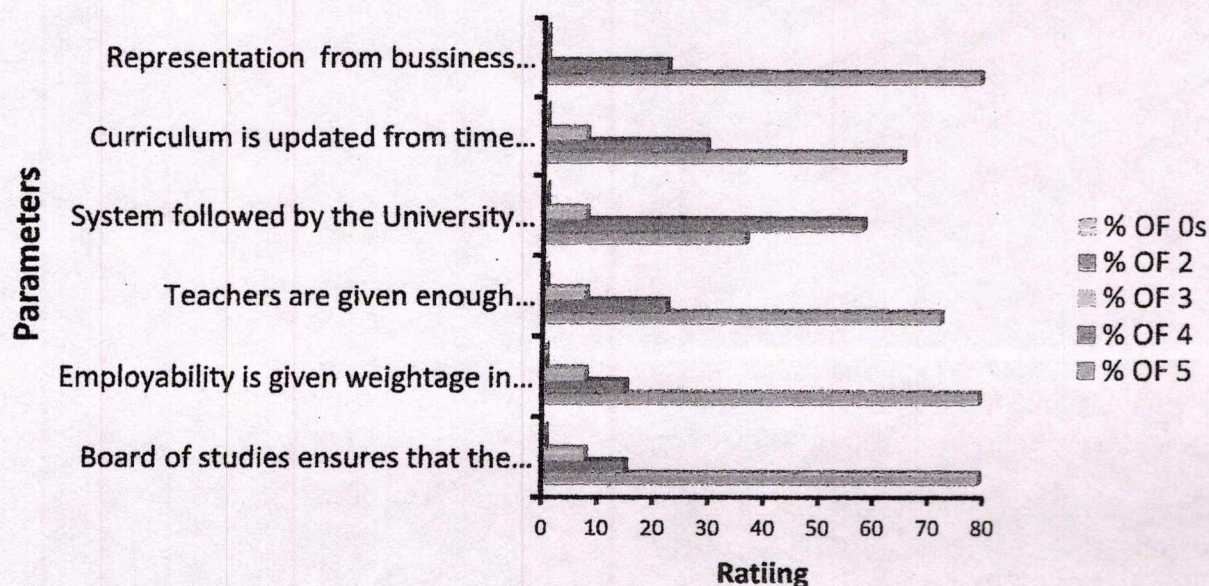


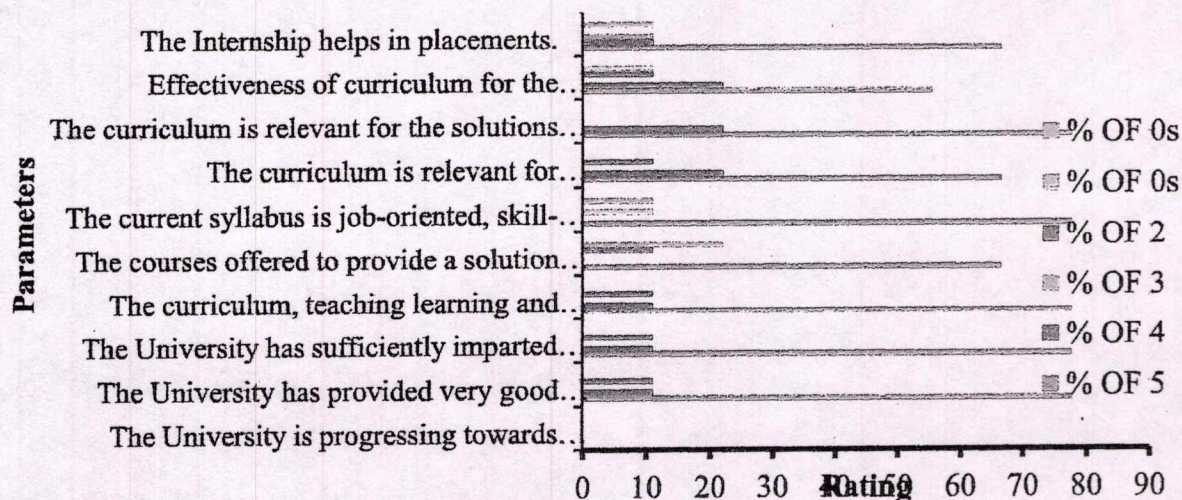
Figure2: Faculty Feedback Analysis

Feedback from Employers

Feedback from the employer were collected in the view to receive inputs regarding the industry requirements so that the curriculum is updated accordingly. Categorization of the ratings are as follows: Strongly agree (5), Agree (4), Moderately agree (3), Disagree (2), Strongly disagree (1). The analysis was done on the bases of the percentage of the of response received for the various parameters.

Questions	Strongly Agree	Agree	Moderately Agree	Disagree	Strongly Disagree
The University is progressing towards building the academia-industry gap by inculcating advanced techniques in teaching learning process as per the requirement of industry.	0	0	0	0	0
The University has provided very good infrastructure support and a logistic arrangement for holding the placement derives.	78	11	0	11	0
The University has sufficiently imparted the softskills, analytical reasoning etc. inside its students.	78	11	0	11	0
The curriculum, teaching learning and evaluation process of SIET is matching with the recent industrial requirement.	78	11	0	11	0
The courses offered to provide a solution to issues relevant to Gender, Environment, and Sustainability.	67	0	0	11	22
The current syllabus is job-oriented, skill-based and value-oriented.	78	0	11	11	0
The curriculum is relevant for	78	11	0	11	0

Effectiveness of curriculum for the development of entrepreneurship.	71	14	14	0	0
The Internship helps in placements.	73	11	16	0	0



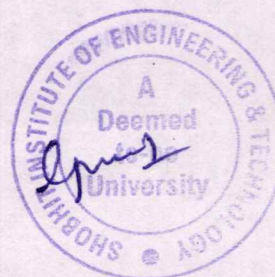
Figures3: Employer Feedback

Alumni Feedback key Observations

- Satisfied by the course curriculum no suggestions for any modifications.

Parent Feedback Key observations

- The parents were satisfied by the course curriculum.





Shobhit
Institute of Engineering & Technology
Deemed to-be-University
EDUCATION EMPOWERS

Action Taken Report

Date: May 27, 2022

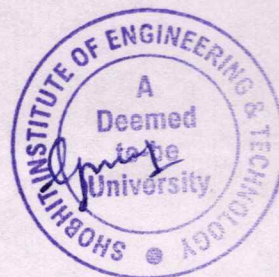
Program Name: B.Tech. (Biotechnology)

Feedback of the stake holders was satisfactory. All stakeholders were satisfied by the syllabus, no modifications and revisions were suggested.

Faculty members will guide and motivate the students for their active participation in the Extension activities and Initiatives of the department.

[Handwritten Signature]
(HOD)

Dean/Director

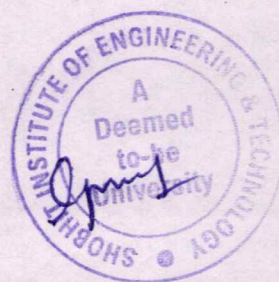




Shobhit
Institute of Engineering & Technology
Deemed to be University
EDUCATION EMPOWERS

Feedback Report

(M.Sc. Mathematics)





Shobhit

Institute of Engineering & Technology
Deemed to-be-University

EDUCATION EMPOWERS

Feedback Analysis –M.Sc. Mathematics

Students Feedback Analysis (in %)

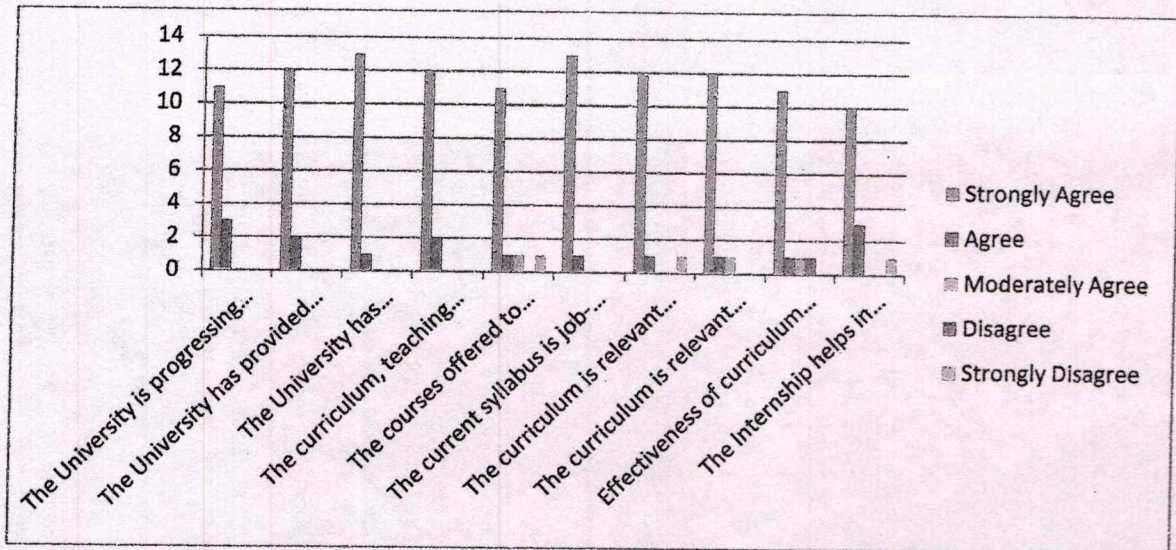
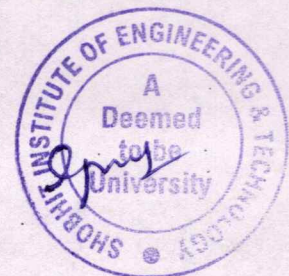
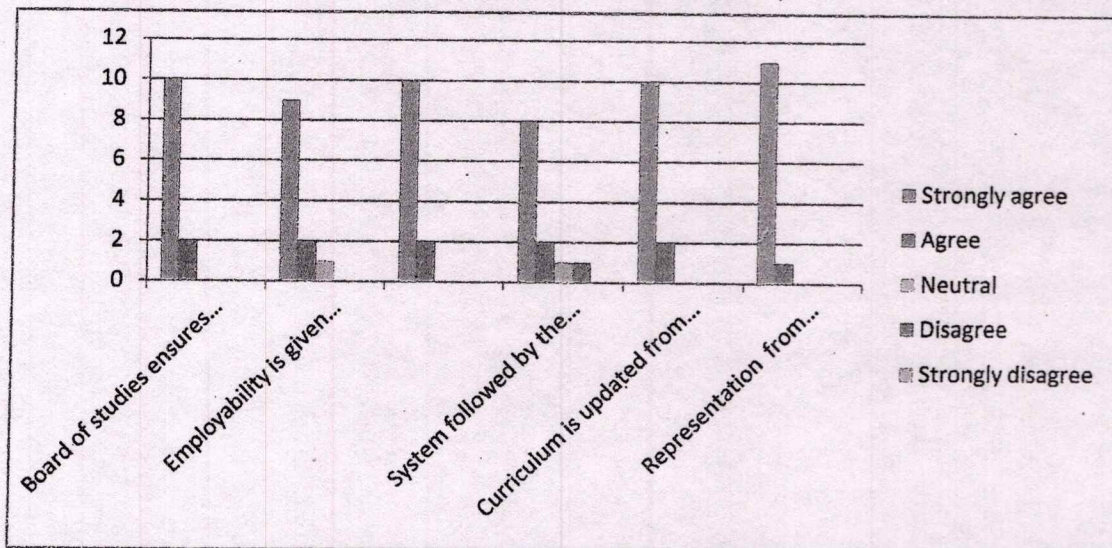


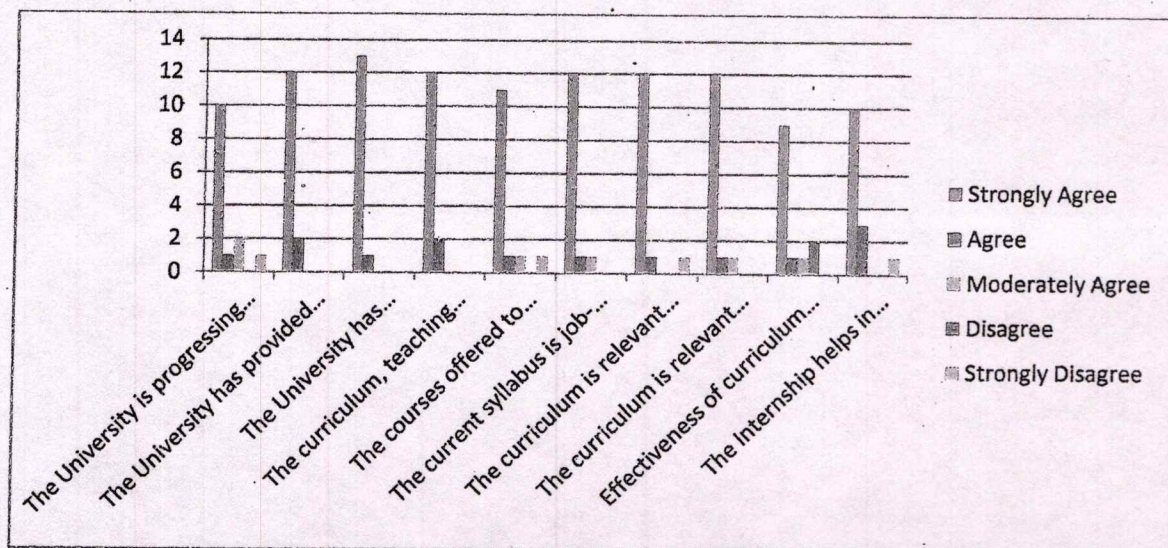
Figure1: Histogram representing student feedback

Faculty Feedback Analysis (in %)



Alumni feedback Analysis (in %)

Alumni rated the prescribed syllabus of the university course curriculum as Very Good. Since internship helps in placement, suggestions to improve Industry academia relationships were given.



Figures 2: Histogram Representing Alumni Feedback

Employers suggested introducing new courses in curriculum for the development of entrepreneurship.

Alumni Feedback key observations

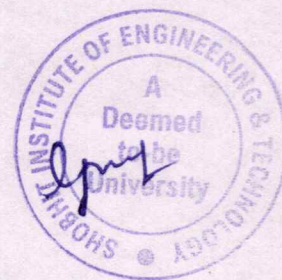
- More industry expert's interaction sessions required.
- Educational tours to get practical exposure of the industry environment.
- Curriculum should be more Industry- oriented curriculum.

Parent Feedback Key observations

- Suggestions to include some specialized courses.
- Practical sessions should be increased.
- Involvement of students in physical activities

Action Taken –M.Sc. (Mathematics)

1. Based on the feedback received from the Stakeholders and inputs of the experts present, curriculum revision was not conducted. Some of the courses were added with minor changes from the teaching scheme.



Shobhit Institute of Engineering & Technology

(A NAAC Accredited, Deemed to-be University)

Student Feedback Form

In our constant endeavor to enhance your learning experience, we invite your feedback. Feel free to give your frank, fair and honest feedback about your faculty and facilities. You may also suggest any other improvements which you would like to see in future.

Name of the Student: (Optional): _____

Department / School: SBAS Programme: M.Sc (Mathematics)

Year: 2021-22 Session: 2022

Make a tick mark in the appropriate cell.

A. Teaching Learning Process

S.No.	Give your feedback on the following	Excellent	Very Good	Good	Average	Poor
1	Extent of syllabi covered in the class	✓				
2	Student Teacher Interaction		✓			
3	Teaching Methodology adopted by the teachers	✓				
4	Career Guidance and Assistance By Teachers	✓				
5	Integration of theory and Practical (if applicable)	✓				
6	Overall learning environment	✓				

Suggestions to improve the teaching learning process:

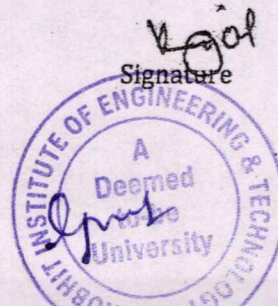
No

B. Curriculum Aspect

S.No.	Give your feedback on the following	Excellent	Very Good	Good	Average	Poor
1	Syllabus offered by the courses.	✓				
2	The design of the courses in terms of extra learning or self- learning.	✓				
3	Courses offering LAB components.		✓			
4	Depth of the syllabus of the courses in relation to the competencies expected by industry/current global scenarios.	✓				
5	Sequence of the courses provided in the curriculum.	✓				

Curriculum related suggestions (if any):

Signature



Shobhit Institute of Engineering & Technology
(A NAAC Accredited, Deemed to-be University)

Student Feedback Form

In our constant endeavor to enhance your learning experience, we invite your feedback. Feel free to give your frank, fair and honest feedback about your faculty and facilities. You may also suggest any other improvements which you would like to see in future.

Name of the Student: (Optional): _____

Department / School: SBA **Programme:** M.Sc. (Maths)

Year: 2021-22 **Session:** 2022

Make a tick mark in the appropriate cell.

A. Teaching Learning Process

S.No.	Give your feedback on the following	Excellent	Very Good	Good	Average	Poor
1	Extent of syllabi covered in the class	✓				
2	Student Teacher Interaction		✓			
3	Teaching Methodology adopted by the teachers	✓				
4	Career Guidance and Assistance By Teachers		✓			
5	Integration of theory and Practical (if applicable)	✓				
6	Overall learning environment	✓				

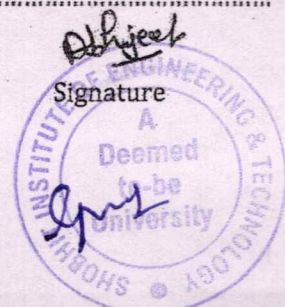
Suggestions to improve the teaching learning process:

B. Curriculum Aspect

S.No.	Give your feedback on the following	Excellent	Very Good	Good	Average	Poor
1	Syllabus offered by the courses.	✓				
2	The design of the courses in terms of extra learning or self- learning.	✓				
3	Courses offering LAB components.		✓			
4	Depth of the syllabus of the courses in relation to the competencies expected by industry/current global scenarios.	✓				
5	Sequence of the courses provided in the curriculum.	✓				

Curriculum related suggestions (if any):

Nil



Shobhit Institute of Engineering & Technology

(A NAAC Accredited, Deemed to-be University)

Feedback from Parents (Session:)

Madam/Sir, we shall be extremely grateful to you for your frank and complete feedback to the University. This will help us to provide to your ward and future-students much better educational service.

Name: Mr./Ms/Mrs.: Shashinand Singh Age (years): 52 Sex (M/F): M

Occupation: Service Education: P.G.

Student's name: Kajal Course of study: M.Sc. Year/Semester: IIIrd

Does the student live in a hostel or s/he is a day scholar: hostel

S.No.	Particulars	Strongly agree	Agree	Neutral	Disagree	Strongly disagree
01	Getting my ward admission in this University was a right decision		✓			
02	Admission process is fair and accurate	✓				
03	My ward appears improving her/his knowledge base while studying here	✓				
04	Discipline in the University is good	✓				
05	My ward talks to us and friends about studies, professors & other activities of the University		✓			
06	Positive change in the behaviour of my ward after joining the University	✓				
07	No sudden and unexpected financial demand from the University (other than already known to me fees, charges etc.)		✓			
08	All information about the University is accessible and duly notified	✓				
09	The University website is very informative and regularly updated					
10	Curriculum of the course is well designed and promotes learning experience of the students	✓				
11	Employability is focused in the curriculum		✓			
12	Facts about my ward's progress in the University, known to me from Univ.	✓				
13	Examination results are declared in time		✓			
14	University employees are cooperative	✓				
15	Hostel and mess facilities are satisfactory	✓				
16	Changes introduced by the University are intimated & are progressive in nature	✓				
17	My ward gives me hope that s/he has a bright future	✓				

Suggestions for further improvement: _____

Signature



Shobhit Institute of Engineering & Technology

(A NAAC Accredited, Deemed to-be University)

Feedback from Parents (Session:)

Madam/Sir, we shall be extremely grateful to you for your frank and complete feedback to the University. This will help us to provide to your ward and future-students much better educational service.

Name: Mr./Ms./Mrs.: Amrushi Rana Age (years): 60 Sex (M/F): M

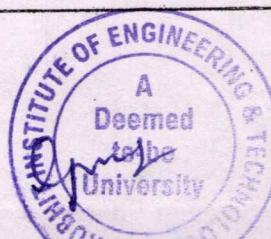
Occupation: Farmer Education: 8th

Student's name: Abhijeet Rana Course of study: B.Tech Year/Semester: III

Does the student live in a hostel or s/he is a day scholar: _____

S.No.	Particulars	Strongly agree	Agree	Neutral	Disagree	Strongly disagree
01	Getting my ward admission in this University was a right decision	<input checked="" type="checkbox"/>				
02	Admission process is fair and accurate		<input checked="" type="checkbox"/>			
03	My ward appears improving her/his knowledge base while studying here	<input checked="" type="checkbox"/>				
04	Discipline in the University is good		<input checked="" type="checkbox"/>			
05	My ward talks to us and friends about studies, professors & other activities of the University	<input checked="" type="checkbox"/>				
06	Positive change in the behaviour of my ward after joining the University		<input checked="" type="checkbox"/>			
07	No sudden and unexpected financial demand from the University (other than already known to me fees, charges etc.)		<input checked="" type="checkbox"/>			
08	All information about the University is accessible and duly notified					
09	The University website is very informative and regularly updated	<input checked="" type="checkbox"/>				
10	Curriculum of the course is well designed and promotes learning experience of the students		<input checked="" type="checkbox"/>			
11	Employability is focused in the curriculum	<input checked="" type="checkbox"/>				
12	Facts about my ward's progress in the University, known to me from Univ.	<input checked="" type="checkbox"/>	<input checked="" type="checkbox"/>			
13	Examination results are declared in time	<input checked="" type="checkbox"/>				
14	University employees are cooperative		<input checked="" type="checkbox"/>			
15	Hostel and mess facilities are satisfactory		<input checked="" type="checkbox"/>			
16	Changes introduced by the University are intimated & are progressive in nature		<input checked="" type="checkbox"/>			
17	My ward gives me hope that s/he has a bright future		<input checked="" type="checkbox"/>			

Suggestions for further improvement: _____



3/11/24
Signature

Shobhit Institute of Engineering & Technology

(A NAAC Accredited, Deemed to-be University)

Alumni Feedback Form

In our constant endeavor to enhance your learning experience, we invite your feedback. Feel free to give your frank, fair and honest feedback about your faculty and facilities. You may also suggest any other improvements which you would like to see in future.

Name: Mr./Ms/Mrs. Anusha Kumari

Age (years): 36

Sex (M/F): M

Dept.: SBA S Course studied: M.Sc. Year of Study: 02

Occupation/ Designation/Organisation: Student Meha Now teacher

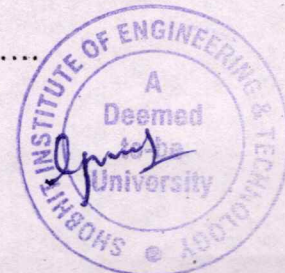
Make a tick mark in the appropriate cell:

Sl. #	Particulars	Strongly agree	Agree	Neutral	Disagree	Strongly disagree
1	I feel proud to have been a student of the University	<input checked="" type="checkbox"/>				
2	The learning I had in the University has been useful in my career.	<input checked="" type="checkbox"/>				
3	Developments in the University in the recent years are appreciative.		<input checked="" type="checkbox"/>			
4	The new courses introduced met contemporary requirements.	<input checked="" type="checkbox"/>				
5	The University is involving alumni in its activities.		<input checked="" type="checkbox"/>			
6	The alumni have a role to play in academically strengthening the University.	<input checked="" type="checkbox"/>				
7	The alumni have a role to play in financially strengthening the University.	<input checked="" type="checkbox"/>				
8	University's initiatives to strengthen its network with industry, Business houses and other institutions is a good step and the alumni have a role to play in this initiative.	<input checked="" type="checkbox"/>				
9	Alumni are tied to their alma mater not only for emotional reasons but also as a matter of responsibility towards their younger successors	<input checked="" type="checkbox"/>				

Suggestions regarding University curriculum:

N/A

Any other Suggestions:



Anusha

Signature

Shobhit Institute of Engineering & Technology

(A NAAC Accredited, Deemed to-be University)

Alumni Feedback Form

In our constant endeavor to enhance your learning experience, we invite your feedback. Feel free to give your frank, fair and honest feedback about your faculty and facilities. You may also suggest any other improvements which you would like to see in future.

Name: Mr./Ms/Mrs. Parneeta Aggarwal

Age (years): 23 Sex (M/F): M

Dept.: SBAS Course studied: 02 Year of Study: 02

Occupation/ Designation/Organisation: TGT M.Sc (Mathematics)

Make a tick mark in the appropriate cell:

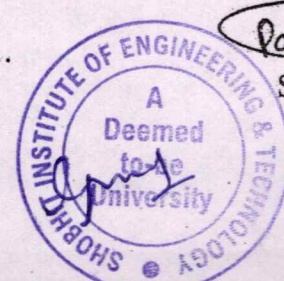
Sl. #	Particulars	Strongly agree	Agree	Neutral	Disagree	Strongly disagree
1	I feel proud to have been a student of the University		✓			
2	The learning I had in the University has been useful in my career.	✓				
3	Developments in the University in the recent years are appreciative.	✓				
4	The new courses introduced met contemporary requirements.	✓				
5	The University is involving alumni in its activities.	✓				
6	The alumni have a role to play in academically strengthening the University.					
7	The alumni have a role to play in financially strengthening the University.	✓				
8	University's initiatives to strengthen its network with industry, Business houses and other institutions is a good step and the alumni have a role to play in this initiative.	✓				
9	Alumni are tied to their alma mater not only for emotional reasons but also as a matter of responsibility towards their younger successors		✓			

Suggestions regarding University curriculum:

good University

Any other Suggestions:

.....



Parneeta
Signature

Shobhit Institute of Engineering & Technology

(A NAAC Accredited, Deemed to-be University)

Feedback from Faculty Members

We invite your feedback. Feel free to give your frank, fair and honest feedback. You may also suggest any other improvements which you would like to see in future.

Name of the faculty: Dr. R. K. Jain

Designation: Professor

Department: SBAS

Date of Joining: 15/07/2017

Session: 2021-22

This opinion of yours will be kept and used confidentially. Please note that this opinion is valuable for the improvement of the system of the university and the IQAC will be grateful to you for your frank and valuable opinion. You may also give suggestions below each section table.

I. CURRICULUM DESIGN AND DEVELOPMENT

S.No.	Particulars	Strongly agree	Agree	Neutral	Disagree	Strongly disagree
1	Board of studies ensures that the latest and relevant programmes are being offered		✓			
2	Employability is given weightage in curriculum design and development		✓			
3	Teachers are given enough freedom to contribute their ideas on curriculum design and development	✓				
4	The system followed by the university for the design and development of curriculum is effective.		✓			
5	The curriculum is updated from time to time.		✓			
6	Representation from business and industry in PG Boards of studies is helpful in designing and improving the courses.		✓			

Suggestions for improvement in curriculum design and development:- we have to

improve our courses according new policy of N.E.P

II. TEACHING, LEARNING, EVALUATION & RESEARCH

S.No.	Particulars	Strongly agree	Agree	Neutral	Disagree	Strongly disagree
01	Admission process and procedure adopted by the university is effective		✓			
02	The university is able to attract meritorious students			✓		
03	Student-centered learning resources are available in the university		✓			
04	The faculty members update their knowledge and skills			✓		
05	The class work takes place as per schedule		✓			
06	The university central library is a major source of information			✓		
07	The library is used optimally by the teachers			✓		
08	The library is used optimally by the Research Scholars			✓		
09	The library is used optimally by the students		✓			
10	The library is managed effectively		✓			
11	It is easy to use library for issuing books, reading and reference		✓			



12	Adequate teaching aids are available for the classrooms, seminars, lectures and presentations etc.		✓			
13	Teachers have easy access to learning resources and they are supported in having new resources			✓		
14	Teachers are encouraged to organize seminars/ workshops/ symposia/ conferences etc.		✓			
15	Teachers are encouraged to do research	✓				
16	Teachers are encouraged to participate in seminars/ workshops/ symposia/ conferences etc.			✓		
17	Teachers are encouraged to undertake extension service programmes			✓		
18	Teachers are encouraged to establish linkages with industry		✓			
19	Teachers are encouraged to take up consultancy services		✓			
20	Merit of the teachers is recognized			✓		
21	Examination system followed by the university is effective		✓			
22	The evaluation system followed by the university is effective		✓			

Suggestions if any, for improvement in teaching, learning, Evaluation and Research: we should add some more research journal (off line) in basic sciences

III. INFRASTRUCTURE

S.No.	Particulars	Strongly agree	Agree	Neutral	Disagree	Strongly disagree
01	Classrooms and the furniture etc are adequate	✓				
02	Enough number of toilets are available for the teachers, staff and the students	✓				
03	Building and furniture are well maintained	✓				
04	The laboratories wherever needed, are adequately equipped		✓			
05	The infrastructure available in the department is optimally used		✓			
06	Enough parking facility is available in the university campus		✓			
07	Roads are maintained well within the campus		✓			
08	Water resources are adequately provided		✓			
09	Safe drinking water is available in the campus		✓			
10	Sports infrastructure and facilities are adequately available within the university	✓				
11	Enough green efforts are consistently made by the university	✓				
12	The university is making adequate efforts to conserve energy	✓				
13	Rain water is not wasted inside the campus	✓				

Suggestions if any, for improvement in infrastructure:

N.A.



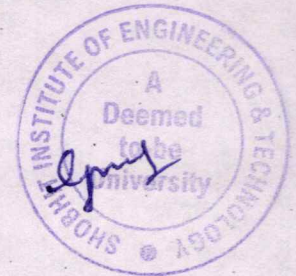
IV. GOVERNANCE:

S.No.	Particulars	Strongly agree	Agree	Neutral	Disagree	Strongly disagree
01	Management makes sincere efforts for the development of the institute	✓				
02	The administration is accessible		✓			
03	Quality initiatives taken up during the last academic year are contributing for improvement		✓			
04	MoUs with other universities/ institutions/ industry are meaningful and they enhance the scope for mutual cooperation with institutions and research organizations of good repute	✓				
05	Faculty-members are given freedom to express their opinions		✓			
06	IQAC is working well for promoting quality in the university			✓		
07	The university is providing adequate opportunities and support to the faculty and their family members.			✓		

Suggestions for improvement of Governance:

Each faculty members must get medical insurance
(group insurance)

Rt. Zain
Signature



Shobhit Institute of Engineering & Technology

(A NAAC Accredited, Deemed to-be University)

Feedback from Faculty Members

We invite your feedback. Feel free to give your frank, fair and honest feedback. You may also suggest any other improvements which you would like to see in future.

Name of the faculty: M.R. Samir Kumar Designation: A.P.

Department: SCAS

Date of Joining: 21 Oct 2016

Session: 2021-22

This opinion of yours will be kept and used confidentially. Please note that this opinion is valuable for the improvement of the system of the university and the IQAC will be grateful to you for your frank and valuable opinion. You may also give suggestions below each section table.

I. CURRICULUM DESIGN AND DEVELOPMENT

S.No.	Particulars	Strongly agree	Agree	Neutral	Disagree	Strongly disagree
1	Board of studies ensures that the latest and relevant programmes are being offered	<input checked="" type="checkbox"/>				
2	Employability is given weightage in curriculum design and development		<input checked="" type="checkbox"/>			
3	Teachers are given enough freedom to contribute their ideas on curriculum design and development	<input checked="" type="checkbox"/>				
4	The system followed by the university for the design and development of curriculum is effective.	<input checked="" type="checkbox"/>				
5	The curriculum is updated from time to time.	<input checked="" type="checkbox"/>				
6	Representation from business and industry in PG Boards of studies is helpful in designing and improving the courses.	<input checked="" type="checkbox"/>				

Suggestions for improvement in curriculum design and development:-

II. TEACHING, LEARNING, EVALUATION & RESEARCH

S.No.	Particulars	Strongly agree	Agree	Neutral	Disagree	Strongly disagree
01	Admission process and procedure adopted by the university is effective	<input checked="" type="checkbox"/>				
02	The university is able to attract meritorious students		<input checked="" type="checkbox"/>			
03	Student-centered learning resources are available in the university	<input checked="" type="checkbox"/>				
04	The faculty members update their knowledge and skills	<input checked="" type="checkbox"/>				
05	The class work takes place as per schedule	<input checked="" type="checkbox"/>				
06	The university central library is a major source of information	<input checked="" type="checkbox"/>				
07	The library is used optimally by the teachers		<input checked="" type="checkbox"/>			
08	The library is used optimally by the Research Scholars	<input checked="" type="checkbox"/>				
09	The library is used optimally by the students	<input checked="" type="checkbox"/>				
10	The library is managed effectively	<input checked="" type="checkbox"/>				
11	It is easy to use library for issuing books, reading and reference	<input checked="" type="checkbox"/>				



12	Adequate teaching aids are available for the classrooms, seminars, lectures and presentations etc.	✓				
13	Teachers have easy access to learning resources and they are supported in having new resources	✓				
14	Teachers are encouraged to organize seminars/ workshops/ symposia/ conferences etc.		✓			
15	Teachers are encouraged to do research	✓				
16	Teachers are encouraged to participate in seminars/ workshops/ symposia/ conferences etc.		✓			
17	Teachers are encouraged to undertake extension service programmes	✓				
18	Teachers are encouraged to establish linkages with industry			✓		
19	Teachers are encouraged to take up consultancy-services	✓				
20	Merit of the teachers is recognized		✓			
21	Examination system followed by the university is effective			✓		
22	The evaluation system followed by the university is effective	✓				

Suggestions if any, for improvement in teaching, learning, Evaluation and Research:.....

.....

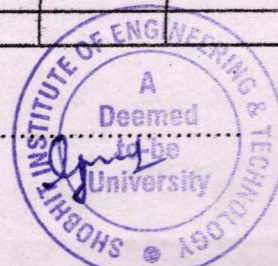
.....

III. INFRASTRUCTURE

S.No.	Particulars	Strongly agree	Agree	Neutral	Disagree	Strongly disagree
01	Classrooms and the furniture etc are adequate	✓				
02	Enough number of toilets are available for the teachers, staff and the students		✓			
03	Building and furniture are well maintained	✓				
04	The laboratories wherever needed, are adequately equipped	✓				
05	The infrastructure available in the department is optimally used	✓				
06	Enough parking facility is available in the university campus	✓				
07	Roads are maintained well within the campus	✓				
08	Water resources are adequately provided	✓				
09	Safe drinking water is available in the campus	✓				
10	Sports infrastructure and facilities are adequately available within the university	✓				
11	Enough green efforts are consistently made by the university	✓				
12	The university is making adequate efforts to conserve energy	✓				
13	Rain water is not wasted inside the campus		✓			

Suggestions if any, for improvement in infrastructure:

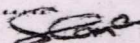
.....

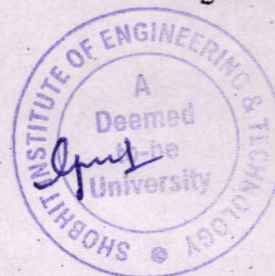


IV. GOVERNANCE:

S.No.	Particulars	Strongly agree	Agree	Neutral	Disagree	Strongly disagree
01	Management makes sincere efforts for the development of the institute	✓				
02	The administration is accessible		✓			
03	Quality initiatives taken up during the last academic year are contributing for improvement	✓				
04	MoUs with other universities/ institutions/ industry are meaningful and they enhance the scope for mutual cooperation with institutions and research organizations of good repute		✓			
05	Faculty-members are given freedom to express their opinions	✓				
06	IQAC is working well for promoting quality in the university		✓			
07	The university is providing adequate opportunities and support to the faculty and their family members.	✓	✓			

Suggestions for improvement of Governance:


Signature



Shobhit Institute of Engineering & Technology

(A NAAC Accredited, Deemed to-be University)

Feedback from Faculty Members

We invite your feedback. Feel free to give your frank, fair and honest feedback. You may also suggest any other improvements which you would like to see in future.

Name of the faculty: Dr. Anil K. Mishra Designation: Asst. Prof.

Department: S.B.A.S.

Date of Joining: 20/10/2015

Session:

This opinion of yours will be kept and used confidentially. Please note that this opinion is valuable for the improvement of the system of the university and the IQAC will be grateful to you for your frank and valuable opinion. You may also give suggestions below each section table.

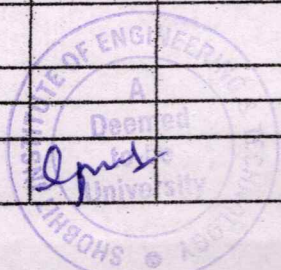
I. CURRICULUM DESIGN AND DEVELOPMENT

S.No.	Particulars	Strongly agree	Agree	Neutral	Disagree	Strongly disagree
1	Board of studies ensures that the latest and relevant programmes are being offered	✓				
2	Employability is given weightage in curriculum design and development	✓				
3	Teachers are given enough freedom to contribute their ideas on curriculum design and development	✓				
4	The system followed by the university for the design and development of curriculum is effective.		✓			
5	The curriculum is updated from time to time.	✓				
6	Representation from business and industry in PG Boards of studies is helpful in designing and improving the courses.	✓				

Suggestions for improvement in curriculum design and development:-

II. TEACHING, LEARNING, EVALUATION & RESEARCH

S.No.	Particulars	Strongly agree	Agree	Neutral	Disagree	Strongly disagree
01	Admission process and procedure adopted by the university is effective		✓			
02	The university is able to attract meritorious students	✓				
03	Student-centered learning resources are available in the university		✓			
04	The faculty members update their knowledge and skills	✓				
05	The class work takes place as per schedule		✓			
06	The university central library is a major source of information	✓				
07	The library is used optimally by the teachers	✓				
08	The library is used optimally by the Research Scholars	✓				
09	The library is used optimally by the students	✓				
10	The library is managed effectively	✓				
11	It is easy to use library for issuing books, reading and reference		✓			



12	Adequate teaching aids are available for the classrooms, seminars, lectures and presentations etc.	✓				
13	Teachers have easy access to learning resources and they are supported in having new resources	✓				
14	Teachers are encouraged to organize seminars/ workshops/ symposia/ conferences etc.	✓				
15	Teachers are encouraged to do research	✓				
16	Teachers are encouraged to participate in seminars/ workshops/ symposia/ conferences etc.	✓				
17	Teachers are encouraged to undertake extension service programmes		✓			
18	Teachers are encouraged to establish linkages with industry	✓				
19	Teachers are encouraged to take up consultancy-services	✓				
20	Merit of the teachers is recognized	✓				
21	Examination system followed by the university is effective		✓			
22	The evaluation system followed by the university is effective	✓				

Suggestions if any, for improvement in teaching, learning, Evaluation and Research:.....

.....


.....

III. INFRASTRUCTURE

S.No.	Particulars	Strongly agree	Agree	Neutral	Disagree	Strongly disagree
01	Classrooms and the furniture etc are adequate	✓				
02	Enough number of toilets are available for the teachers, staff and the students		✓			
03	Building and furniture are well maintained		✓			
04	The laboratories wherever needed, are adequately equipped	✓				
05	The infrastructure available in the department is optimally used		✓			
06	Enough parking facility is available in the university campus	✓				
07	Roads are maintained well within the campus		✓			
08	Water resources are adequately provided	✓				
09	Safe drinking water is available in the campus	✓				
10	Sports infrastructure and facilities are adequately available within the university	✓				
11	Enough green efforts are consistently made by the university	✓	X			
12	The university is making adequate efforts to conserve energy	✓				
13	Rain water is not wasted inside the campus		✓			

Suggestions if any, for improvement in infrastructure:

.....



IV. GOVERNANCE:

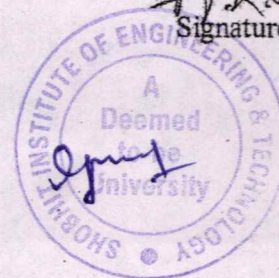
S.No.	Particulars	Strongly agree	Agree	Neutral	Disagree	Strongly disagree
01	Management makes sincere efforts for the development of the institute		✓			
02	The administration is accessible	✓				
03	Quality initiatives taken up during the last academic year are contributing for improvement		✓			
04	MoUs with other universities/ institutions/ industry are meaningful and they enhance the scope for mutual cooperation with institutions and research organizations of good repute	✓				
05	Faculty-members are given freedom to express their opinions		✓			
06	IQAC is working well for promoting quality in the university	✓				
07	The university is providing adequate opportunities and support to the faculty and their family members.		✓			

Suggestions for improvement of Governance:

.....

.....

.....



Signature

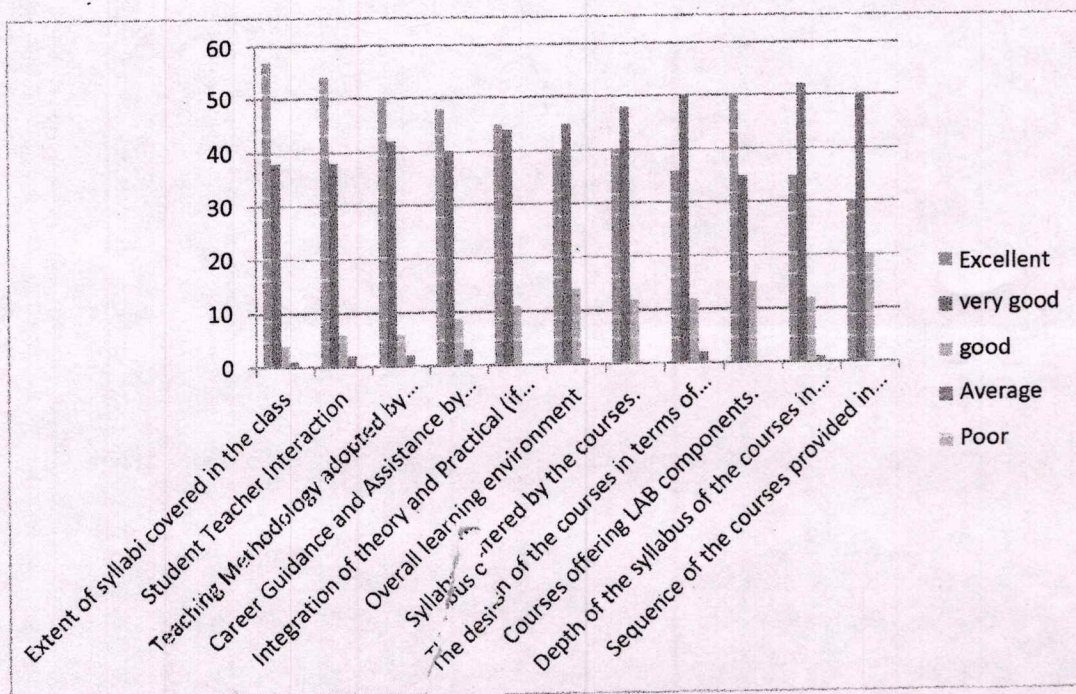
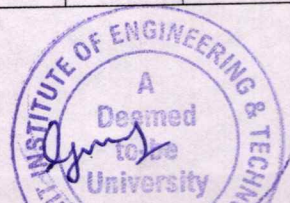


Figure1: Student feedback

Feedback from faculty members

Feedback from faculty members were collected for their views towards the curriculum design & development. Categorization of the ratings are as follows: Strongly agree (5), Agree (4), Neutral (3), Disagree (2), Strongly disagree (1).

	Strongly agree	Agree	Neutral	Disagree	Strongly disagree
Board of studies ensures that the latest and relevant programmes are being offered	71	24	5	0	0
Employability is given weightage in curriculum design and development	69	25	6	0	0
Teachers are given enough freedom to contribute their ideas on curriculum design and development	65	33	2	0	0
System followed by the University for the design and development of curriculum is effective	64	30	6	0	0
Curriculum is updated from time to time	60	38	2	0	0
Representation from business and industry in Boards of studies is helpful in designing and improving the course business and industry	60	40	0	0	0



Handwritten signature

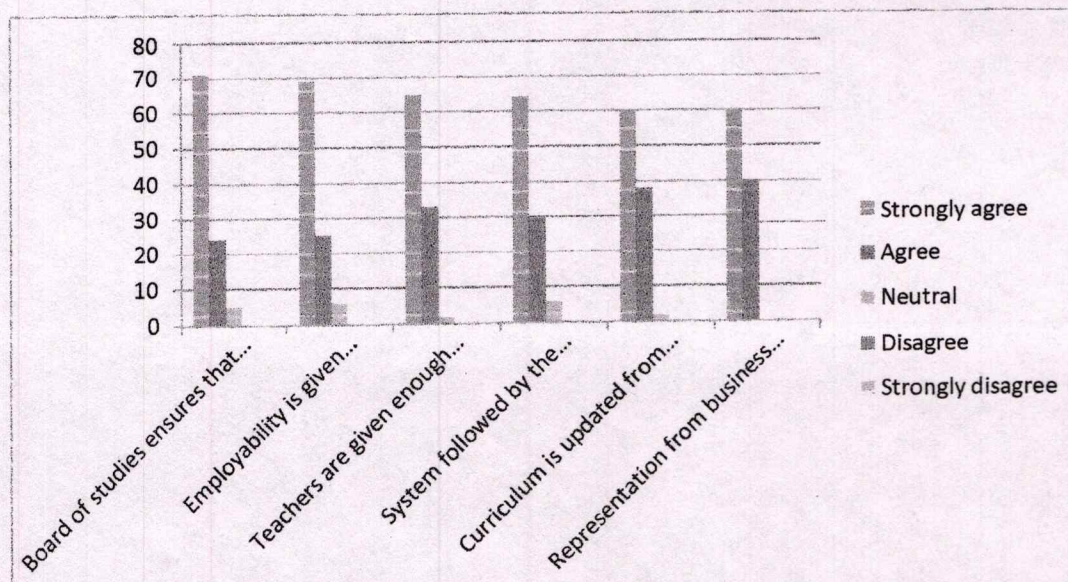


Figure2: Faculty Feedback Analysis

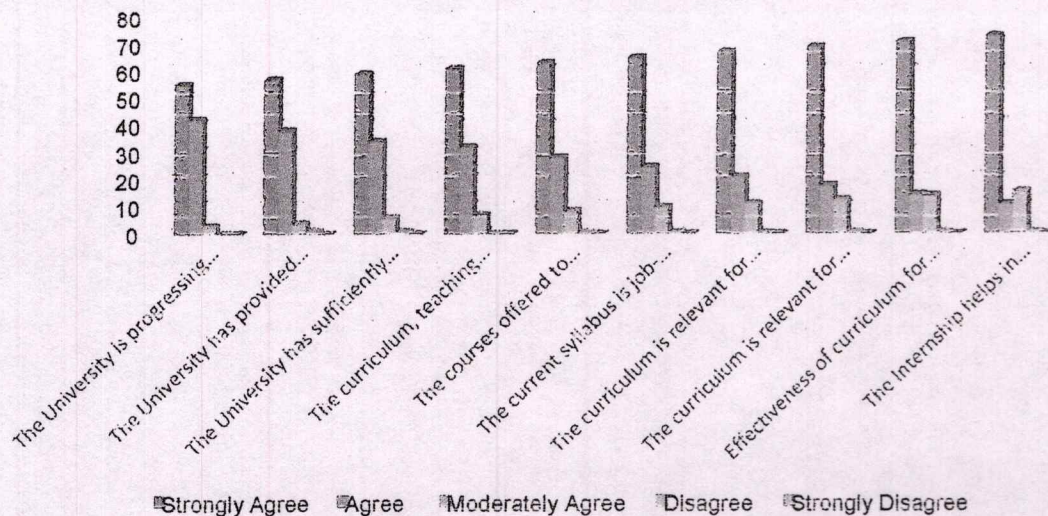
Feedback from Employers

Feedback from the employer were collected in the view to receive inputs regarding the industry requirements so that the curriculum is updated accordingly. Categorization of the ratings are as follows: Strongly agree (5), Agree (4), Moderately agree (3), Disagree (2), Strongly disagree (1). The analysis was done on the basis of the percentage of the of response received for the various parameters.

Questions	Strongly Agree	Agree	Moderately Agree	Disagree	Strongly Disagree
The University is progressing towards building the academia-industry gap by inculcating advanced techniques in teaching learning process as per the requirement of industry.	42	56	2	0	0
The University has provided very good infrastructure support and a logistic arrangement for holding the placement derives.	55	40	4	1	0
The University has sufficiently imparted the soft skills, analytical reasoning etc. inside its students.	60	34	5	1	0
The curriculum, teaching learning and evaluation process of SIET is matching with the recent industrial requirement.	61	32	7	0	0
The courses offered to provide a solution to issues relevant to Gender, Environment, and Sustainability.	65	28	7	0	0
The current syllabus is job-oriented, skill-based and value-oriented.	60	30	10	1	0
The curriculum is relevant for employability and job placements.	67	21	11	1	0



The curriculum is relevant for the solutions of global and national problems.	70	18	12	0	0
Effectiveness of curriculum for the development of entrepreneurship.	73	15	12	0	0
The Internship helps in placements.	75	13	12	0	0



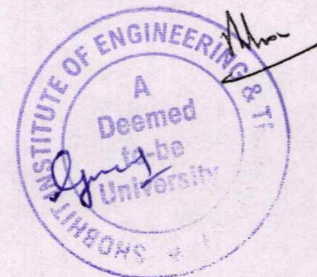
Figures2: Employer Feedback

Alumni Feedback key observations

- Satisfied by the course curriculum no suggestions for any modifications.

Parent Feedback Key observations

- Satisfied by the course curriculum no suggestions for any modifications.



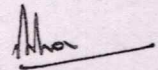
Action Taken Report

Date: May 30, 2022

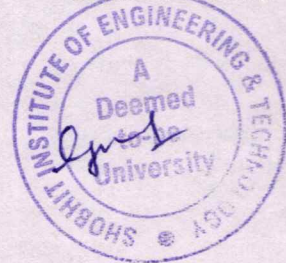
Program Name: B.B.A. (Business Administration)

Feedback of the stake holders was satisfactory. All stakeholders were satisfied by the syllabus, no modifications and revisions were suggested.

Faculty members will guide and motivate the students for their active participation in the Activities and Initiatives of the department.



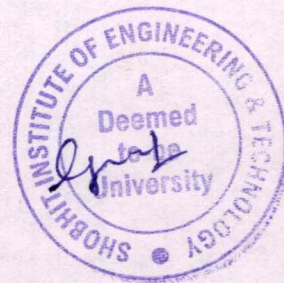
Dean/Director



Feedback On Curriculum

Masters of Computer Applications

Session 2021-2022



Feedback Analysis

Program Name: MCA

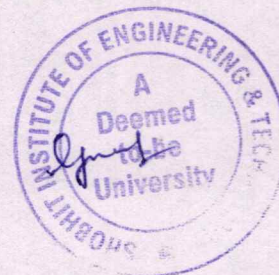
Session: 2021-22

Annual feedback of different stakeholders (students, faculty members, employers and alumnae) was conducted, get important inputs for the curriculum - enrichment.

Feedback from students

The feedback was obtained on a scale of 1 to 5. The categorization of rating based on average score of different parameters is as follows: Excellent (5), Very good (4), Good (3), Average (2), Poor (1). The results are derived in terms of percentage of students with common views, average rating.

Questions	Excellent	Very Good	Good	Average	Poor
Extent of syllabi covered in the class	18	45	20	9	7
Student Teacher Interaction	18	39	10	20	9
Teaching Methodology adopted by the teachers	9	27	18	27	9
Career Guidance and Assistance by Teachers	11	32	23	16	7
Integration of theory and Practical (if applicable)	11	32	24	18	5
Overall learning environment	7	32	24	20	7
Syllabus offered by the courses.	11	18	19	30	14
The design of the courses in terms of extra learning or self-learning.	5	11	24	34	16
Courses offering LAB components.	14	36	16	20	7
Depth of the syllabus of the courses in relation to the competencies expected by industry/current global scenarios.	16	55	10	9	7
Sequence of the courses provided in the curriculum.	9	50	24	5	2



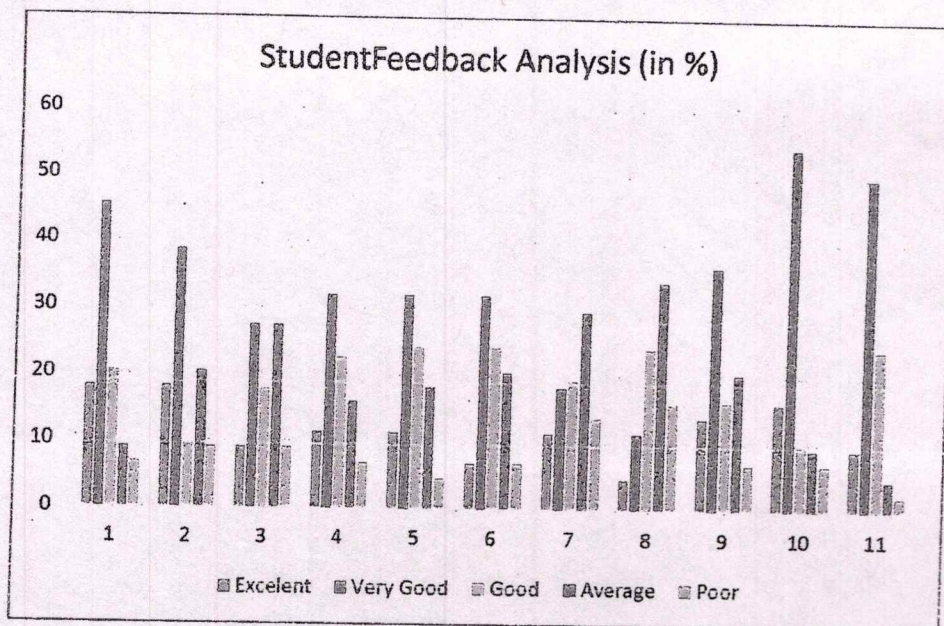
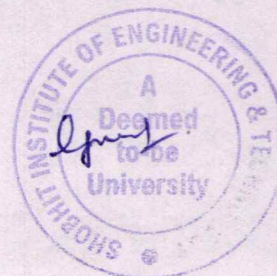


Figure1: Chart Representing Students Feedback

Feedback from faculty members

Feedback from faculty members were collected for their views towards the curriculum design & development. Categorization of the ratings are as follows: Strongly agree (5), Agree (4), Neutral (3), Disagree (2), Strongly disagree (1).

Questions	Strongly Agree	Agree	Neutral	Disagree	Strongly Disagree
Board of studies ensures that the latest and relevant programmes are being offered	63	37	0	0	0
Employability is given weightage in curriculum design and development	68	26	5	1	0
Teachers are given enough freedom to contribute their ideas on curriculum design and development	58	42	0	0	0
System followed by the University for the design and development of curriculum is Effective	58	37	5	0	0
Curriculum is updated from time to time	79	16	0	1	0
Representation from business and industry in Boards of studies is helpful in designing and improving the course business and industry	53	37	11	1	0



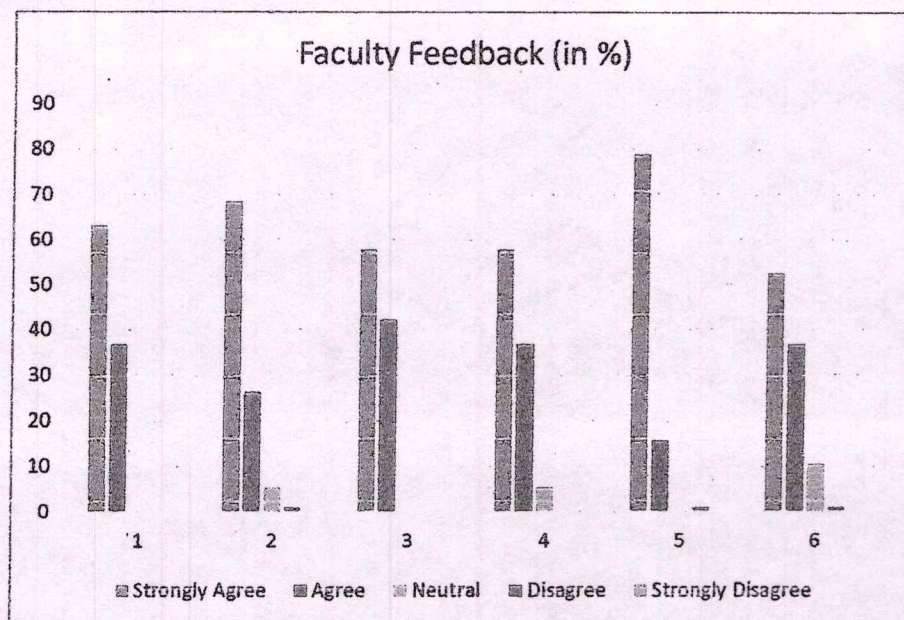


Figure2: Faculty Feedback Analysis

Feedback from Employers

Feedback from the employer were collected in the view to receive inputs regarding the industry requirements so that the curriculum is updated accordingly. Categorization of the ratings are as follows: Strongly agree (5), Agree (4), Moderately agree (3), Disagree (2), Strongly disagree (1). The analysis was done on the bases of the percentage of the of response received for the various parameters.

Questions	Strongly Agree	Agree	Neutral	Disagree	Strongly Dis agree
The University is progressing towards building the academia-industry gap by inculcating advanced techniques in teaching learning process as per the requirement of industry.	33	53	13	0	0
The University has provided very good infrastructure support and a logistic arrangement for holding the placement derives.	73	27	0	0	0
The University has sufficiently imparted the soft skills, analytical reasoning etc. inside its students.	20	47	27	0	7
The curriculum, teaching learning and evaluation process of SIET is matching with the recent industrialrequirement.	27	53	20	0	0
The courses offered to provide a solution to issuesrelevant to Gender, Environment, and Sustainability.	40	47	7	0	0
The current syllabus is job-oriented, skill-based andvalue-oriented.	27	53	20	0	0
The curriculum is relevant for employability and jobplacements.	40	47	13	0	0
The curriculum is relevant for the solutions of globaland national problems.	27	60	13	0	0
Effectiveness of curriculum for the development ofentrepreneurship.	20	60	20	0	0
The Internship helps in placements.	47	40	13	0	0

The curriculum is relevant for the solutions of global and national problems.	63	32	5	0	0
Effectiveness of curriculum for the development of entrepreneurship.	77	21	2	0	0
The Internship helps in placements.	96	4	0	0	0

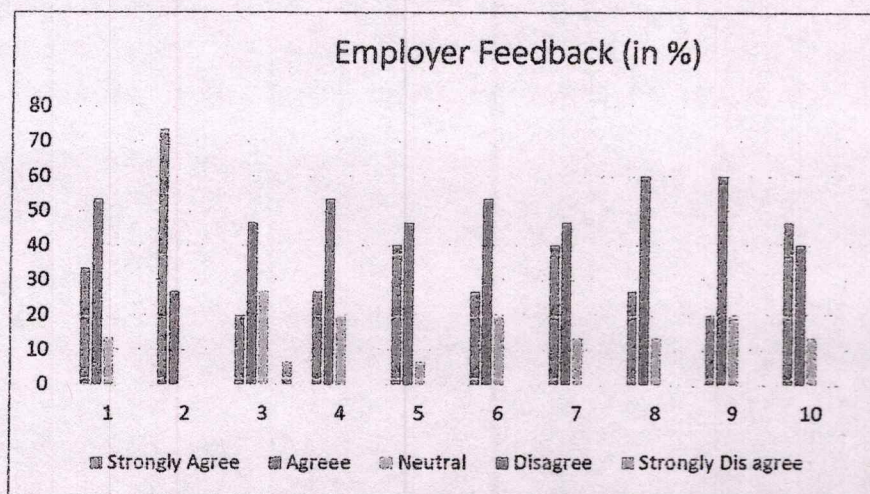
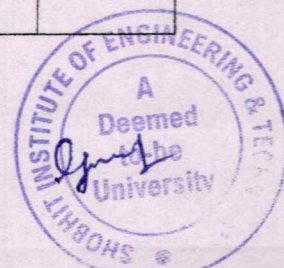
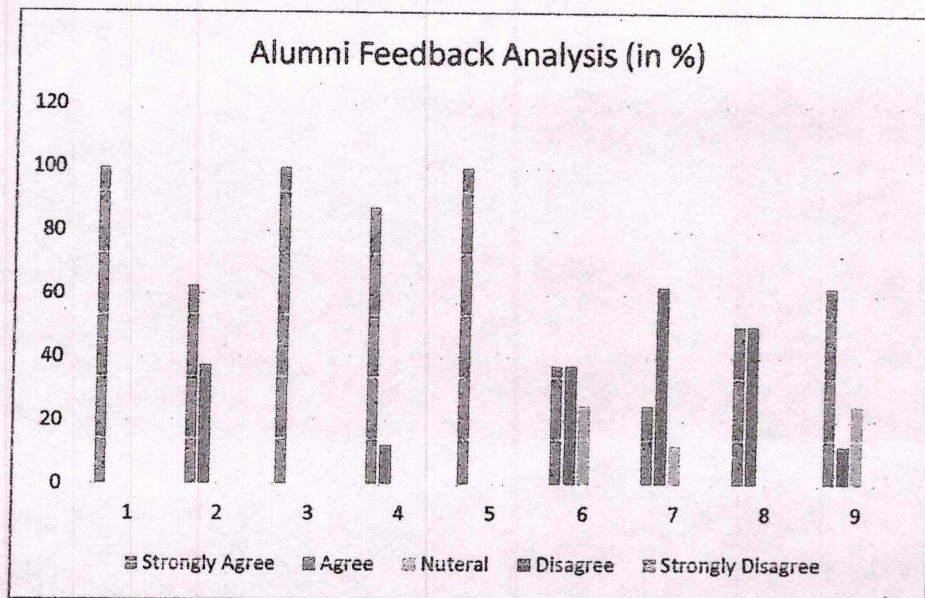


Figure3: Employer Feedback

Alumni Feedback observations

Questions	Strongly Agree	Agree	Neutral	Disagree	Strongly Disagree
I feel proud to have been a student of the University	100	0	0	0	0
The learning I had in the University has been useful in my career.	62.5	37.5	0	0	0
Developments in the University in the recent years are appreciative.	100	0	0	0	0
The new courses introduced met contemporary requirements.	87.5	12.5	0	0	0
The University is involving alumni in its activities.	100	0	0	0	0
The alumni have a role to play in academically strengthening the University.	37.5	37.5	25	0	0
The alumni have a role to play in financially strengthening the University.	25	62.5	12.5	0	0
University's initiatives to strengthen its network with industry, Business houses and other institutions is a good step and the alumni have a role to play in this initiative.	50	50	0	0	0
Alumni are tied to their alma mater not only for emotional reasons but also as a matter of responsibility towards their younger successors.	62.5	12.5	25	0	0





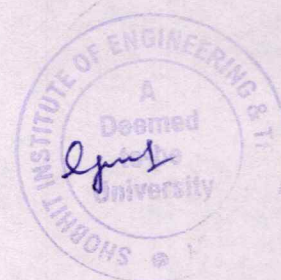
Action Taken Report

Date: 27/06/2022

Program Name: MCA

- With the introduction of specialization courses in the curriculum all stake holders were satisfied by the curriculum, as it met the industry requirement.
- No major modifications were suggested.
- The minor suggestions stated will be considered during the curriculum revision in future.
- Focus on industry-oriented skills for better internship opportunity for the students will be given through skill enhancement related workshops & expert talks.


Dean/Director





Shobhit

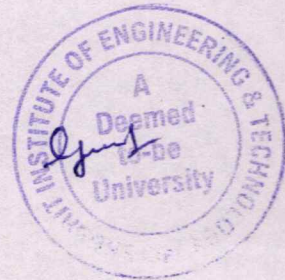
Institute of Engineering & Technology
Deemed to-be-University

EDUCATION EMPOWERS

Feedback On Curriculum

B.Tech. (Computer Science & Engineering)

Session 2021-2022



Feedback Analysis

Program Name: B.Tech. (CSE) **Session:** 2021-22

Annual feedback of different stakeholders (students, faculty members, employers and alumnae) was conducted, get important inputs for the curriculum - enrichment. Students at the end of every academic session provide feedback on teaching learning process and curriculum aspect. Faculty members mainly focus on the curriculum design and development as per the industry requirement. Employers too provide important inputs to prepare students on emerging technologies, which can give good job opportunities to the students. Feedback regarding the campus facilities and curriculum form alumnae and parents as well.

Feedback from students

The feedback was obtained on a scale of 1 to 5. The categorization of rating based on average score of different parameters is as follows: Excellent (5), Very good (4), Good (3), Average (2), Poor (1). The results are derived in terms of percentage of students with common views, average rating.

Questions	Excellent	Very Good	Good	Average	Poor
Extent of syllabi covered in the class	45	44	10	2	0
Student Teacher Interaction	42	37	11	8	2
Teaching Methodology adopted by the teachers	34	37	23	6	0
Career Guidance and Assistance by Teachers	35	34	13	15	3
Integration of theory and Practical (if applicable)	32	37	23	8	0
Overall learning environment	24	42	23	8	3
Syllabus offered by the courses.	44	27	19	5	5
The design of the courses in terms of extra learning or self- learning.	19	53	15	11	2
Courses offering LAB components.	31	50	11	6	2
Depth of the syllabus of the courses in relation to the competencies expected by industry/current global scenarios.	45	35	18	2	0
Sequence of the courses provided in the curriculum.	34	44	11	11	0

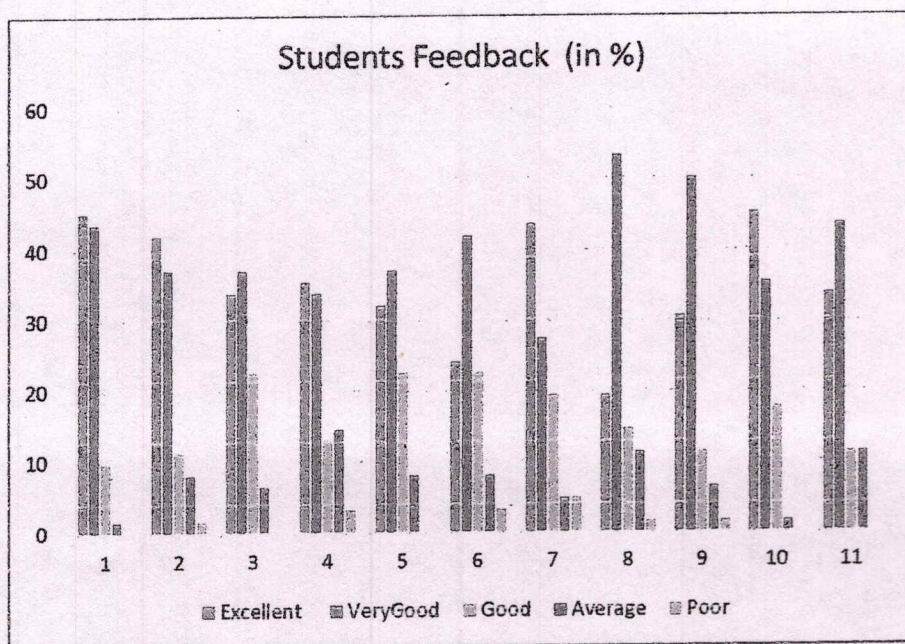
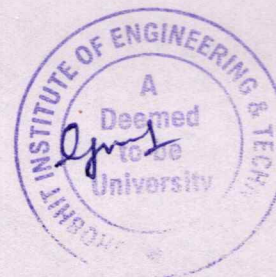


Figure1: Student feedback

Feedback from faculty members

Feedback from faculty members were collected for their views towards the curriculum design & development. Categorization of the ratings are as follows: Strongly agree (5), Agree (4), Neutral (3), Disagree (2), Strongly disagree (1).

Questions	Strongly Agree	Agree	Neutral	Disagree	Strongly Disagree
Board of studies ensures that the latest and relevant programmes are being offered	63	37	0	0	0
Employability is given weightage in curriculum design and development	68	26	5	1	0
Teachers are given enough freedom to contribute their ideas on curriculum design and development	58	42	0	0	0
System followed by the University for the design and development of curriculum is Effective	58	37	5	0	0
Curriculum is updated from time to time	79	16	0	1	0
Representation from business and industry in Boards of studies is helpful in designing and improving the course business and industry	53	37	11	1	0



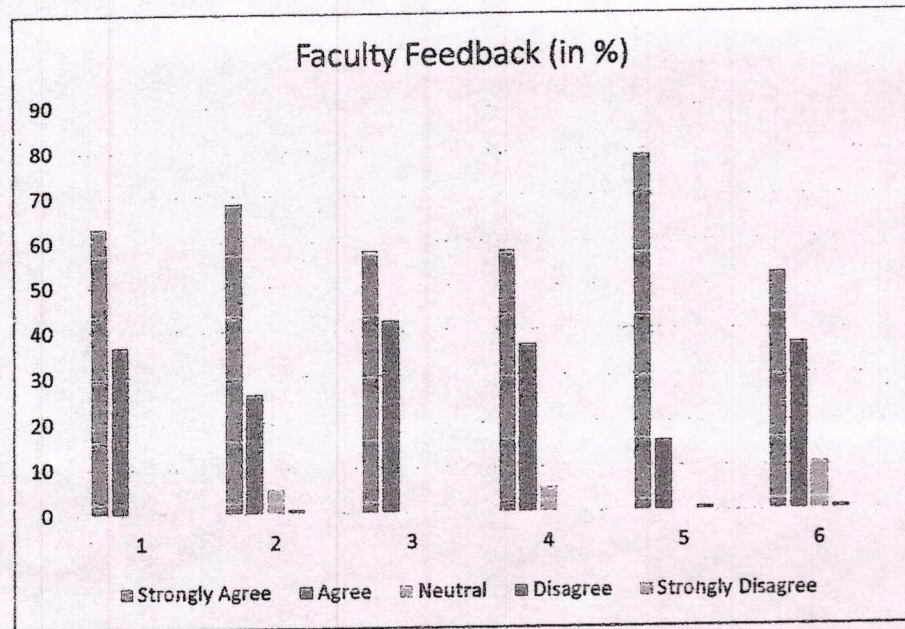


Figure2: Faculty Feedback Analysis

Feedback from Employers

Feedback from the employer were collected in the view to receive inputs regarding the industry requirements so that the curriculum is updated accordingly. Categorization of the ratings are as follows: Strongly agree (5), Agree (4), Moderately agree (3), Disagree (2), Strongly disagree (1). The analysis was done on the bases of the percentage of the of response received for the various parameters.

Questions	Strongly Agree	Agree	Neutral	Disagree	Strongly Disagree
The University is progressing towards building the academia-industry gap by inculcating advanced techniques in teaching learning process as per the requirement of industry.	33	53	13	0	0
The University has provided very good infrastructure support and a logistic arrangement for holding the placement derives.	73	27	0	0	0
The University has sufficiently imparted the soft skills, analytical reasoning etc. inside its students.	20	47	27	0	7
The curriculum, teaching learning and evaluation process of SIET is matching with the recent industrial requirement.	27	53	20	0	0
The courses offered to provide a solution to issues relevant to Gender, Environment, and Sustainability.	40	47	7	0	0
The current syllabus is job-oriented, skill-based and value-oriented.	27	53	20	0	0
The curriculum is relevant for employability and job placements.	40	47	13	0	0
The curriculum is relevant for the solutions of global and national problems.	27	60	13	0	0
Effectiveness of curriculum for the development of entrepreneurship.	20	60	20	0	0
The Internship helps in placements.	47	40	13	0	0

The curriculum is relevant for the solutions of global and national problems.	63	32	5	0	0
Effectiveness of curriculum for the development of entrepreneurship.	77	21	2	0	0
The Internship helps in placements.	96	4	0	0	0

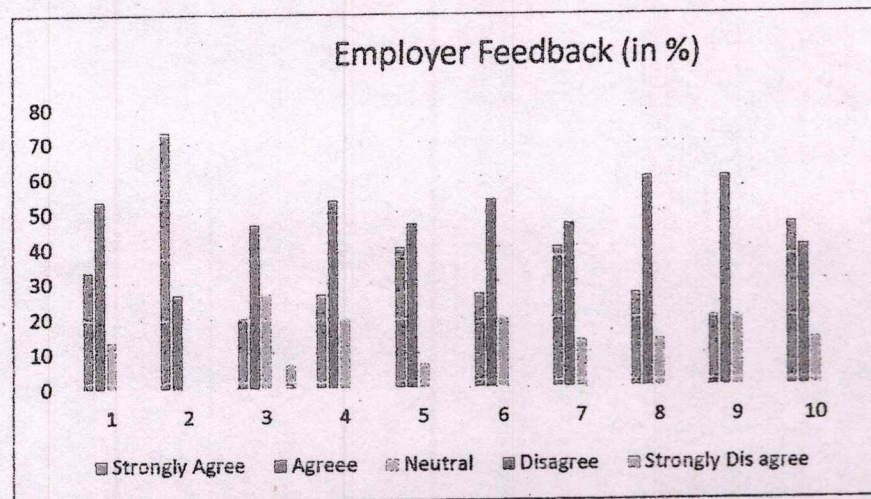
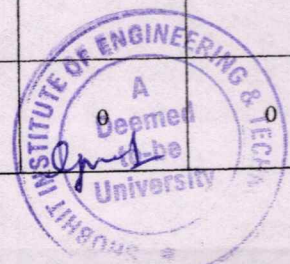


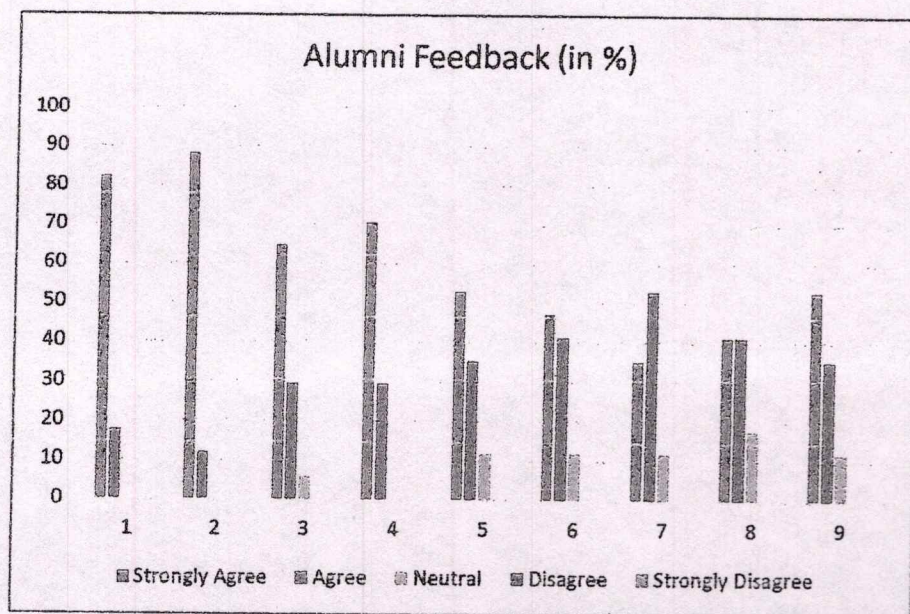
Figure3: Employer Feedback

Alumni Feedback observations

Questions	Strongly Agree	Agree	Neutral	Disagree	Strongly Disagree
I feel proud to have been a student of the University	82	18	0	0	0
The learning I had in the University has been useful in my career.	88	12	0	0	0
Developments in the University in the recent years are appreciative.	65	29	6	0	0
The new courses introduced met contemporary requirements.	71	29	0	0	0
The University is involving alumni in its activities.	53	35	12	0	0
The alumni have a role to play in academically strengthening the University.	47	41	12	0	0
The alumni have a role to play in financially strengthening the University.	35	53	12	0	0
University's initiatives to strengthen its network with industry, Business houses and other institutions is a good step and the alumni have a role to play in this initiative.	41	41	18	0	0
Alumni are tied to their alma mater not only for emotional reasons but also as a matter of responsibility towards their younger successors.	53	35	12	0	0

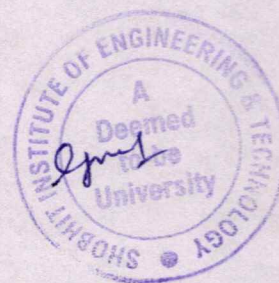


Satisfied by the course curriculum no suggestions for any modifications.



Parent Feedback Key observations

- The parents were satisfied by the course curriculum.

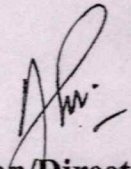


Action Taken Report

Date: 23/06/2022

Program Name: B.Tech. (CSE)

- Feedback of the stake holders was satisfactory.
- All stakeholders were satisfied by the syllabus adapted.
- No major modifications were suggested.
- Motivational talks, industrial visits & sessions on emerging trends were suggested by the students, faculty members and employers.
- Many related activities will be conducted for the overall development of the students.
- Students will be motivated for the active participation in the different extension activities.


Dean/Director

